



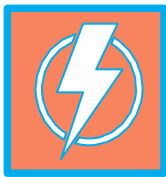
**Report of Drone Thermography 30030 kwp DC
capacity,
FIRST ENERGY 3 PVT LTD.
village: Virvav, Tal: Tankara, Dist: Morbi,
363650**



OBJECTIVE OF IR INSPECTION

- The primary **objective of this IR/Thermal inspection is to find anomalies** which indicate specific types of defects of various components of a Solar PV Module, the cause of such types of defects to avoid further damage & ensure normal functioning of modules.
- **AI-powered drone inspections** of solar panels enable fast and cost-effective early detection of potential power losses and safety risks, helping to minimize operational downtime and protect your asset value.
- We also offer a **cloud-based platform** for secure storage and easy access to all inspection data. Our services help reduce operations and maintenance (O&M) costs by enabling more targeted, efficient on-ground inspections — particularly useful for tasks like **Technical Due Diligence**, where focus on key findings is essential.

SCOPE OF INSPECTION & METHODOLOGY



SCOPE

The scope of this project entails a non-contact infrared thermal inspection performed with the thermal sensor mounted on a UAV inspect thermal & visible anomalies on solar PV panels.



METHODOLOGY

This powerplant was divided into Multiple geographical blocks and each block is converted as a part of report.

DATA COLLECTION

The Block was covered in multiple flights using thermal sensor mounted on a UAV – the flight path was optimized to enable the creation of thermal Orthomosaic layer. The data collection process is explained in the following steps:

- The flight mission was designed for the specific layouts using compatible map files that contain the plants GPS boundaries.
- Image resolution & overlapped were specific at the time of mission planning. Less than 5cm Pixels is the GSD resolution. The degree of overlap between consecutive images is specified using frontal overlap & side overlap parameters. The values of these parameters are 80% & 80% respectively for thermal.
- Upon the receiving the confirmation that the environmental conditions were within satisfactory levels the scan was carried out. Some key parameters that were considered were irradiance, wind speed, cloud cover and time of the day. The parameters thresholds were considered as the prescribed by the IEC TS62446-3:2017.
- The UAV then embarked on a near autonomous flight with minimal inputs from the pilots.

FAULT CATEGORY

Fault category will help you decide your next actions steps based on severity and impact of findings.

REMEDIATION RECOMMENDED FAULTS

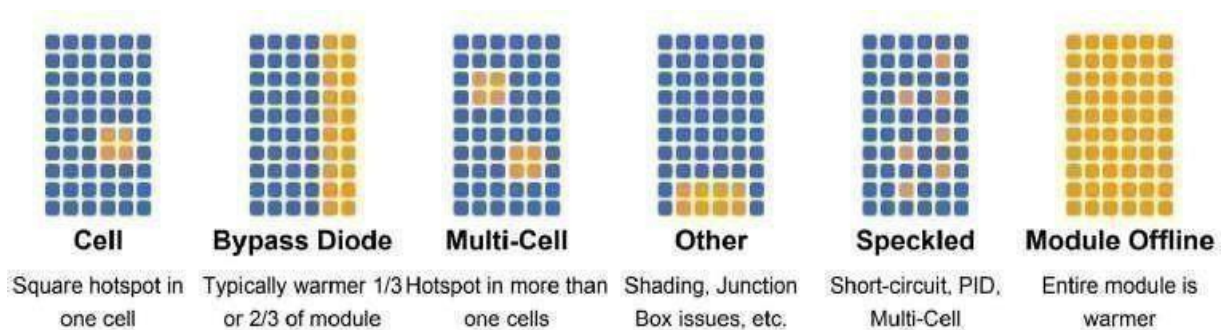
Modules with a high probability of causing system energy loss. The choice to remediate modules depends on anomaly density, replacement costs and replacement availability.

MONITOR & REMEDIATE FAULTS

Modules that pose a significant known energy loss or potential safety hazard on the site which require prioritized attention to recover energy loss and improve site safety

LONG-TERM MONITORING FAULTS

These modules have a low probability of causing extensive energy loss. These anomalies are unlikely to require remediation immediately but tracking the progression of anomalies over time is recommended.



EXAMPLE OF ANOMALIES

Below are visual examples of anomalies

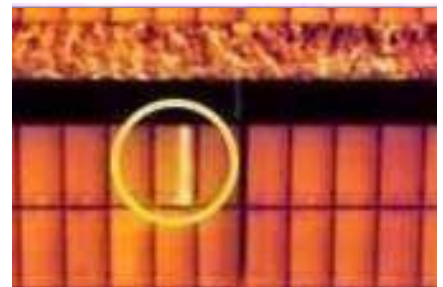
Cell Hotspot



Multi Cell Hotspot



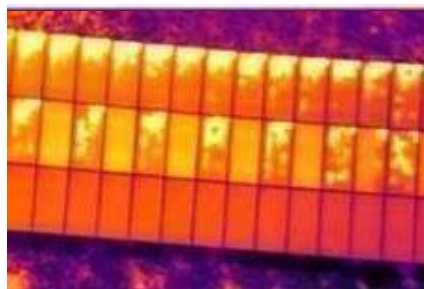
Bypass Diode



Power Mismatch



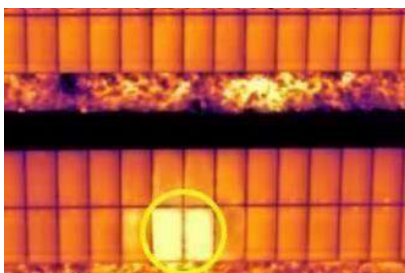
Speckled



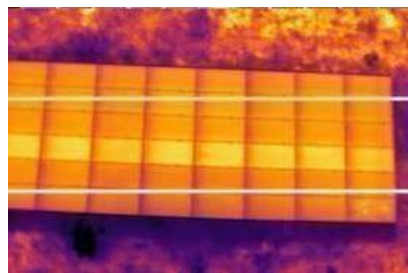
PID



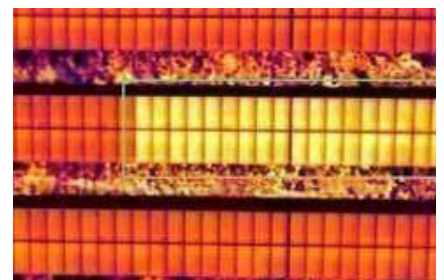
Module Offline



Partial String Offline



String Offline



1. Site Overview

1.1 Company Details

Company Name	Mitarsh Energy Pvt Ltd
Address	606-607, The Orion, Near Balaji temple, Vaishnodevi, Infront of Nirma University SG highway, Ahmedabad

1.2 Site Summary

Project Name	First Energy 3
Project Location	Village: Virvav, Tankara: Morbi, State: Gujarat
Total Capacity	30030 kWp
Coordinates	70.6564458866946, 22.55814837089433
Type of Modules	Fixed-Mono-Facial
Tilt Angle	19 deg
Total Module Installed	54600
Total Area	82.5 Acres

1.3 Weather Details

Temperature	25.5 to 31.61 °C
Wind Speed	8.5 km/h
Irradiation during fly	630 to 900
Cloud Cover	Sunny

1.4 Sensor Details

Sensor Type	IR (Thermal)
Sensor Resolution	640 x 512, f/1.0, 53mm UHR Infrared image, Image resolution upto 1280 x 1024
Frame Rate	30 Hz
Lense Model	40mm

1.5 Data capture

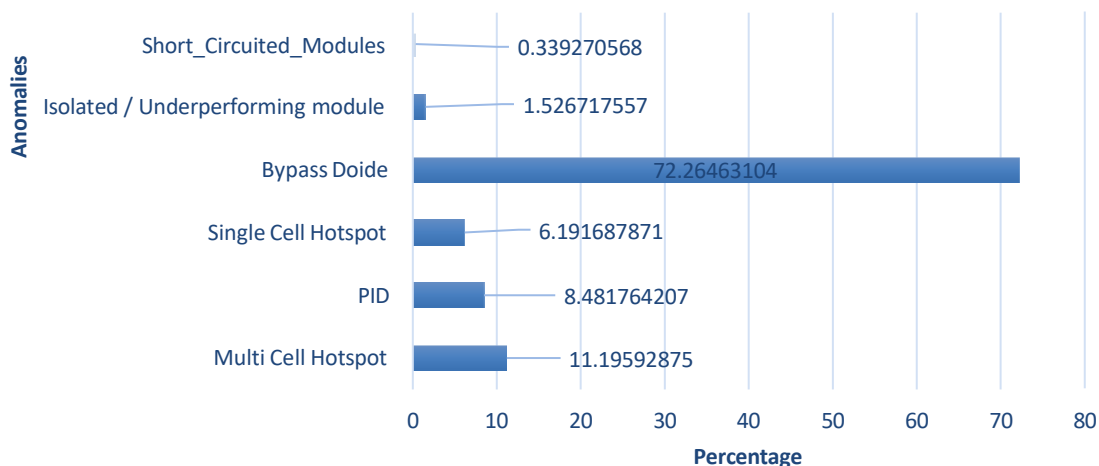
GSD	3cm
Fly Height	30mtr
Front Overlap	80%
Side Overlap	80%

2. RESULTS& ANALYSIS

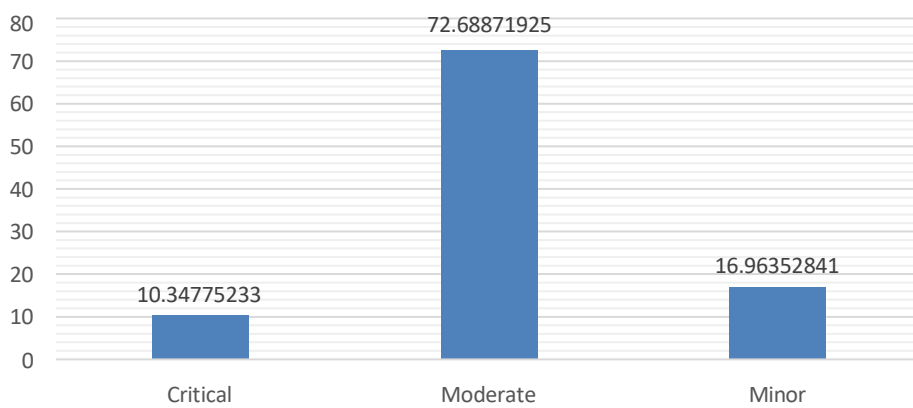
QUICKSUMMARY

Sr. No	Type of Defect	Total	Percentage
1	Multi Cell Hotspot	132	11.19592875
2	PID	100	8.481764207
3	Single Cell Hotspot	73	6.191687871
4	Bypass Diode	852	72.26463104
5	Isolated / Underperforming module	18	1.526717557
6	Short_Circuited_Modules	4	0.339270568
		1179	100

Percentage Wise Anomalies



Percentage Wise Severity



FID	INV_No	ICR_No	M_No	String No	Module No	Minimum Temp	Maximum Temp	Delta Temp	Anomalies Type	IEC_Category	Severity	Count	Irradiation	Long	Lat
1	32	2	1	2	L-12	45.9	54.8	8.9	Bypass Diode	IEC3	Moderate	852	795	70.65566362	22.55788046
2	10	1	11	21	U-21	48.2	52.9	4.7	Bypass Diode	IEC3	Moderate	852	795	70.6557526	22.55796562
3	10	1	11	21	U-11	46.7	54.2	7.5	Bypass Diode	IEC3	Moderate	852	795	70.65563945	22.55796734
4	11	1	12	24	U-25	45.8	55.7	9.9	Bypass Diode	IEC3	Moderate	852	924	70.65440407	22.55818544
5	10	1	1	1	U-18	45.3	51.4	6.1	Bypass Diode	IEC3	Moderate	852	924	70.65435194	22.55805007
6	10	1	2	4	L-15	45.2	45.9	0.7	Bypass Diode	IEC3	Moderate	852	924	70.65433109	22.5579645
7	11	1	2	23	L-6	47.1	49.1	2	Bypass Diode	IEC3	Moderate	852	924	70.65424366	22.55790019
8	76	1	8	15	U-22	45.2	51.9	6.7	Bypass Diode	IEC3	Moderate	852	707.73	70.66030502	22.55459691
9	76	1	12	19	U-22	45.2	48.1	2.9	Bypass Diode	IEC3	Moderate	852	707.73	70.66037196	22.55452842
10	76	3	7	13	U-6	45.6	48.2	2.6	Bypass Diode	IEC3	Moderate	852	707.73	70.66064929	22.5546589
11	76	3	2	3	L-16	45.2	50.3	5.1	Bypass Diode	IEC3	Moderate	852	707.73	70.66042426	22.55477872
12	75	3	8	15	U-20	45.8	53.4	7.6	Bypass Diode	IEC3	Moderate	852	707.73	70.66081028	22.55485743
13	76	3	1	1	L-21	44.6	48.8	4.2	Bypass Diode	IEC3	Moderate	852	707.73	70.6604812	22.55484476
14	75	3	12	24	U-5	45.8	49.1	3.3	Bypass Diode	IEC3	Moderate	852	707.73	70.66047221	22.55493026
15	75	3	12	24	L-6	45.7	49.6	3.9	Bypass Diode	IEC3	Moderate	852	707.73	70.66048307	22.55491328
16	74	3	10	19	U-7	45.6	53.8	8.2	Bypass Diode	IEC3	Moderate	852	707.73	70.66067366	22.55546682
17	75	3	9	17	U-15	48.4	56.4	8	Bypass Diode	IEC3	Moderate	852	707.73	70.66057053	22.55540073
18	74	3	10	19	U-25	46.8	50.8	4	Bypass Diode	IEC3	Moderate	852	707.73	70.66087666	22.55546365
19	74	3	8	15	U-13	43.4	47.9	4.5	Bypass Diode	IEC3	Moderate	852	707.73	70.6607626	22.55560036
20	74	3	4	8	L-13	45.3	54	8.7	Bypass Diode	IEC3	Moderate	852	707.73	70.66072234	22.555717
21	7	3	12	24	U-25	45.8	51.8	6	Bypass Diode	IEC3	Moderate	852	707.73	70.66048595	22.55587508
22	73	3	12	24	U-8	47.3	51.6	4.3	Bypass Diode	IEC3	Moderate	852	707.73	70.66063282	22.55587251
23	71	3	12	23	U-18	47.6	52.3	4.7	Bypass Diode	IEC3	Moderate	852	707.73	70.66037089	22.55594448
24	71	3	12	25	L-19	48.2	52.3	4.1	Bypass Diode	IEC3	Moderate	852	707.73	70.66038538	22.55592928
25	70	3	12	25	L-12	48.1	53.2	5.1	Bypass Diode	IEC3	Moderate	852	707.73	70.66064615	22.5559882
26	68	3	11	23	L-4	46.2	50.1	3.9	Bypass Diode	IEC3	Moderate	852	707.73	70.66013661	22.55613184
27	76	3	12	25	L-4	48.7	52.8	4.1	Bypass Diode	IEC3	Moderate	852	707.73	70.66078198	22.55618772
28	65	3	12	23	U-2	47.3	52.3	5	Bypass Diode	IEC3	Moderate	852	707.73	70.66042046	22.55621409
29	65	3	12	24	U-19	45.7	50.9	5.2	Bypass Diode	IEC3	Moderate	852	707.73	70.66027195	22.5562162
30	72	3	11	22	L-25	47.5	53.6	6.1	Bypass Diode	IEC3	Moderate	852	707.73	70.66050089	22.55625993
31	70	3	10	20	L-28	44	53	9	Bypass Diode	IEC3	Moderate	852	707.73	70.66121383	22.55624856
32	73	3	9	17	U-14	44.2	50.3	6.1	Bypass Diode	IEC3	Moderate	852	707.73	70.66098942	22.55633798
33	73	3	9	17	U-1	47.02	51.9	4.88	Bypass Diode	IEC3	Moderate	852	707.73	70.66084173	22.55634054
34	73	3	4	8	L-18	45.2	51.2	6	Bypass Diode	IEC3	Moderate	852	707.73	70.66069487	22.55632473
35	73	3	4	7	U-14	46.2	55.3	9.1	Bypass Diode	IEC3	Moderate	852	707.73	70.66065022	22.55634343
36	72	3	3	6	L-20	45	56.7	11.7	Bypass Diode	IEC3	Moderate	852	707.73	70.66001675	22.5564035

FID	INV_No	ICR_No	M_No	String No	Module No	Minimum Temp	Maximum Temp	Delta Temp	Anomalies Type	IEC_Category	Severity	Count	Irradiation	Long	Lat
37	72	3	3	6	L-22	45.8	54.1	8.3	Bypass Diode	IEC3	Moderate	852	707.73	70.66003885	22.55640369
38	72	3	9	17	U-11	45	50.5	5.5	Bypass Diode	IEC3	Moderate	852	707.73	70.66025348	22.5564189
39	72	3	9	18	L-21	44.5	54.7	10.2	Bypass Diode	IEC3	Moderate	852	707.73	70.66036643	22.55639723
40	72	3	9	17	U-24	45.2	57.9	12.7	Bypass Diode	IEC3	Moderate	852	707.73	70.66039899	22.55641586
41	73	3	3	5	U-1	45.6	56.5	10.9	Bypass Diode	IEC3	Moderate	852	707.73	70.66047952	22.55641451
42	73	3	3	6	L-7	48.4	54.7	6.3	Bypass Diode	IEC3	Moderate	852	707.73	70.66054686	22.55639493
43	73	3	3	5	U-20	49.2	52.8	3.6	Bypass Diode	IEC3	Moderate	852	707.73	70.66069371	22.55641085
44	73	3	8	15	U-4	47.5	52.6	5.1	Bypass Diode	IEC3	Moderate	852	707.73	70.66085184	22.55640862
45	73	3	8	15	U-8	47.1	52.3	5.2	Bypass Diode	IEC3	Moderate	852	707.73	70.66089743	22.55640832
46	73	3	8	15	U-27	45.6	51.6	6	Bypass Diode	IEC3	Moderate	852	707.73	70.66111157	22.5564042
47	73	3	2	3	U-24	46.2	55.1	8.9	Bypass Diode	IEC3	Moderate	852	707.73	70.66072145	22.55647838
48	72	3	1	1	U-20	45.8	54	8.2	Bypass Diode	IEC3	Moderate	852	707.73	70.65998339	22.55655745
49	72	3	1	2	L-22	45.1	56.1	11	Bypass Diode	IEC3	Moderate	852	707.73	70.66000481	22.55653847
50	72	3	7	13	U-1	46.9	49	2.1	Bypass Diode	IEC3	Moderate	852	707.73	70.66010764	22.55655583
51	72	3	7	14	L-10	48.3	49.5	1.2	Bypass Diode	IEC3	Moderate	852	707.73	70.66020983	22.55653491
52	73	3	6	11	U-8	45.7	54.2	8.5	Bypass Diode	IEC3	Moderate	852	707.73	70.66086404	22.5565435
53	73	3	6	11	U-9	45.1	55.2	10.1	Bypass Diode	IEC3	Moderate	852	707.73	70.66087539	22.55654322
54	73	3	6	11	U-11	47.3	53.2	5.9	Bypass Diode	IEC3	Moderate	852	707.73	70.66089791	22.55654231
55	70	3	9	18	L-29	46.2	52.6	6.4	Bypass Diode	IEC3	Moderate	852	707.73	70.661084	22.55658803
56	70	3	5	9	U-2	47.8	54.9	7.1	Bypass Diode	IEC3	Moderate	852	707.73	70.66044278	22.5566177
57	72	3	6	11	U-24	47.3	55.8	8.5	Bypass Diode	IEC3	Moderate	852	707.73	70.66035093	22.55661953
58	72	3	6	14	L-19	45.2	54.1	8.9	Bypass Diode	IEC3	Moderate	852	707.73	70.660294	22.55660181
59	72	3	6	11	U-14	48.7	55.2	6.5	Bypass Diode	IEC3	Moderate	852	707.73	70.66023789	22.55662122
60	72	3	6	12	L-7	46.1	58.3	12.2	Bypass Diode	IEC3	Moderate	852	707.73	70.66015925	22.55660458
61	71	3	4	7	U-1	48.7	52.6	3.9	Bypass Diode	IEC3	Moderate	852	707.73	70.65972153	22.55676359
62	71	3	4	7	U-11	46.1	57.5	11.4	Bypass Diode	IEC3	Moderate	852	707.73	70.65983435	22.55676293
63	71	3	4	8	L-10	45.8	52.1	6.3	Bypass Diode	IEC3	Moderate	852	707.73	70.65982241	22.55674414
64	71	3	5	9	U-6	45.7	55.4	9.7	Bypass Diode	IEC3	Moderate	852	707.73	70.65979311	22.55669565
65	71	3	4	8	L-29	45.3	57.1	11.8	Bypass Diode	IEC3	Moderate	852	707.73	70.66003581	22.55674045
66	71	3	10	19	U-3	45.7	54.1	8.4	Bypass Diode	IEC3	Moderate	852	707.73	70.66008325	22.55675838
67	71	3	10	19	U-6	47.2	52.8	5.6	Bypass Diode	IEC3	Moderate	852	707.73	70.66011622	22.5567577
68	70	3	3	5	U-17	46.1	56.1	10	Bypass Diode	IEC3	Moderate	852	707.73	70.66057893	22.55675046
69	70	3	3	5	U-18	45.8	53.9	8.1	Bypass Diode	IEC3	Moderate	852	707.73	70.66059042	22.55675034
70	70	3	3	6	L-22	45.2	55.2	10	Bypass Diode	IEC3	Moderate	852	707.73	70.66063613	22.55673103
71	70	3	4	8	L-21	46	51.6	5.6	Bypass Diode	IEC3	Moderate	852	707.73	70.66063988	22.55666295
72	70	3	4	8	L-27	44.6	49.2	4.6	Bypass Diode	IEC3	Moderate	852	707.73	70.66070695	22.55666225

FID	INV_No	ICR_No	M_No	String No	Module No	Minimum Temp	Maximum Temp	Delta Temp	Anomalies Type	IEC_Category	Severity	Count	Irradiation	Long	Lat
73	70	3	4	7	U-24	46	54.9	8.9	Bypass Diode	IEC3	Moderate	852	707.73	70.66067343	22.5566817
74	70	3	8	16	L-14	46.2	53.2	7	Bypass Diode	IEC3	Moderate	852	707.73	70.66089984	22.55665801
75	70	3	7	13	U-22	45	55.2	10.2	Bypass Diode	IEC3	Moderate	852	707.73	70.66097475	22.55674409
76	71	3	2	4	L-8	45.2	52.6	7.4	Bypass Diode	IEC3	Moderate	852	707.73	70.65976692	22.55688057
77	71	3	2	3	U-30	45.9	58.1	12.2	Bypass Diode	IEC3	Moderate	852	707.73	70.66001569	22.5568942
78	70	3	2	3	U-27	45.8	54.3	8.5	Bypass Diode	IEC3	Moderate	852	707.73	70.66067617	22.55681642
79	70	3	2	3	U-30	45.7	57.1	11.4	Bypass Diode	IEC3	Moderate	852	707.73	70.6607095	22.55681557
80	70	3	6	11	U-8	44.1	52.9	8.8	Bypass Diode	IEC3	Moderate	852	707.73	70.66080101	22.55681402
81	70	3	10	19	L-3	47.5	53.8	6.3	Bypass Diode	IEC3	Moderate	852	707.73	70.66108362	22.55679045
82	70	3	10	19	L-5	45.8	56.1	10.3	Bypass Diode	IEC3	Moderate	852	707.73	70.66110615	22.55678956
83	70	3	10	19	L-12	45.2	55.2	10	Bypass Diode	IEC3	Moderate	852	707.73	70.66118492	22.55678818
84	69	3	11	22	U-8	47.5	56.1	8.6	Bypass Diode	IEC3	Moderate	852	707.73	70.66112278	22.55687584
85	69	3	8	16	L-18	46.1	55.9	9.8	Bypass Diode	IEC3	Moderate	852	707.73	70.6608822	22.55692875
86	69	3	8	15	U-6	45.7	55.2	9.5	Bypass Diode	IEC3	Moderate	852	707.73	70.66074644	22.5569489
87	69	3	4	7	U-29	45.6	52.7	7.1	Bypass Diode	IEC3	Moderate	852	707.73	70.66066679	22.55695084
88	69	3	4	8	L-23	48.1	53.1	5	Bypass Diode	IEC3	Moderate	852	707.73	70.66059817	22.55693373
89	71	3	7	14	L-17	47.2	56.4	9.2	Bypass Diode	IEC3	Moderate	852	707.73	70.6601929	22.5569407
90	69	3	7	4	U-6	49.4	55.9	6.5	Bypass Diode	IEC3	Moderate	852	707.73	70.66040731	22.55695517
91	71	3	1	1	U-17	46.2	52.3	6.1	Bypass Diode	IEC3	Moderate	852	707.73	70.65985431	22.55696441
92	68	3	7	14	L-23	42.9	54.1	11.2	Bypass Diode	IEC3	Moderate	852	707.73	70.66021201	22.55714236
93	69	3	3	5	U-22	44.9	54.3	9.4	Bypass Diode	IEC3	Moderate	852	707.73	70.6605726	22.55701986
94	69	3	7	13	U-27	47.1	58.5	11.4	Bypass Diode	IEC3	Moderate	852	707.73	70.66096612	22.55701283
95	68	3	7	14	L-24	43.9	54.5	10.6	Bypass Diode	IEC3	Moderate	852	707.73	70.66022291	22.55714253
96	68	3	7	13	U-29	41.8	52.1	10.3	Bypass Diode	IEC3	Moderate	852	707.73	70.66027953	22.55716002
97	69	3	1	1	U-24	45.7	58.1	12.4	Bypass Diode	IEC3	Moderate	852	707.73	70.66056229	22.55715496
98	69	3	5	10	L-2	45.3	56.3	11	Bypass Diode	IEC3	Moderate	852	707.73	70.66065403	22.55713514
99	69	3	5	9	U-5	45	52.6	7.6	Bypass Diode	IEC3	Moderate	852	707.73	70.66068771	22.55715258
100	69	3	5	10	L-5	45.6	58.4	12.8	Bypass Diode	IEC3	Moderate	852	707.73	70.66068676	22.55713257
101	69	3	5	9	U-14	46.7	51.6	4.9	Bypass Diode	IEC3	Moderate	852	707.73	70.66078955	22.55715173
102	69	3	5	9	U-30	47.2	53.9	6.7	Bypass Diode	IEC3	Moderate	852	707.73	70.66096946	22.55714785
103	67	3	11	21	L-7	46.8	58.1	11.3	Bypass Diode	IEC3	Moderate	852	707.73	70.66104797	22.55712661
104	67	3	11	21	U-9	45.9	52.3	6.4	Bypass Diode	IEC3	Moderate	852	707.73	70.66107163	22.55714595
105	67	3	11	21	U-11	45.7	54.6	8.9	Bypass Diode	IEC3	Moderate	852	707.73	70.66109361	22.55714589
106	67	3	10	20	U-4	45.6	51.7	6.1	Bypass Diode	IEC3	Moderate	852	707.73	70.66099929	22.55721533
107	68	3	10	19	U-27	45.8	57.2	11.4	Bypass Diode	IEC3	Moderate	852	707.73	70.66058016	22.55722225
108	68	3	10	19	U-22	45.2	58.1	12.9	Bypass Diode	IEC3	Moderate	852	707.73	70.66052359	22.55722323

FID	INV_No	ICR_No	M_No	String No	Module No	Minimum Temp	Maximum Temp	Delta Temp	Anomalies Type	IEC_Category	Severity	Count	Irradiation	Long	Lat
109	68	3	6	12	L-21	45.6	53.6	8	Bypass Diode	IEC3	Moderate	852	707.73	70.66017387	22.55720941
110	68	3	6	11	U-15	45.8	55.4	9.6	Bypass Diode	IEC3	Moderate	852	707.73	70.66010561	22.55722949
111	66	3	11	21	L-10	43.4	49	5.6	Bypass Diode	IEC3	Moderate	852	707.73	70.66089433	22.55773892
112	66	3	5	9	U-25	47	54.6	7.6	Bypass Diode	IEC3	Moderate	852	707.73	70.66079041	22.55769041
113	66	3	5	10	L-18	47.2	51	3.8	Bypass Diode	IEC3	Moderate	852	707.73	70.66071038	22.55767399
114	66	3	8	15	U-26	47	51	4	Bypass Diode	IEC3	Moderate	852	707.73	70.66094571	22.55762106
115	66	3	8	16	L-1	47.5	53.9	6.4	Bypass Diode	IEC3	Moderate	852	707.73	70.66066266	22.55760685
116	67	3	6	12	L-26	49.5	53.4	3.9	Bypass Diode	IEC3	Moderate	852	707.73	70.66103295	22.55753236
117	67	3	6	11	U-24	48.6	52.8	4.2	Bypass Diode	IEC3	Moderate	852	707.73	70.66100976	22.55755218
118	66	3	2	4	L-1	43.9	48	4.1	Bypass Diode	IEC3	Moderate	852	707.73	70.66045186	22.55774542
119	66	3	4	8	L-25	45.8	52.5	6.7	Bypass Diode	IEC3	Moderate	852	707.73	70.66045042	22.55767763
120	66	3	3	6	L-20	44.1	58.1	14	Bypass Diode	IEC3	Moderate	852	707.73	70.66005506	22.55768431
121	65	3	4	7	U-25	45.2	54.2	9	Bypass Diode	IEC3	Moderate	852	707.73	70.65991654	22.55763864
122	66	3	1	11	U-17	44.3	52.1	7.8	Bypass Diode	IEC3	Moderate	852	707.73	70.66016518	22.55763406
123	66	3	10	20	L-18	45.2	52.3	7.1	Bypass Diode	IEC3	Moderate	852	707.73	70.66026366	22.55754587
124	65	3	1	2	L-20	48.2	55.4	7.2	Bypass Diode	IEC3	Moderate	852	707.73	70.65960847	22.55755652
125	65	3	6	12	L-7	43.5	55.3	11.8	Bypass Diode	IEC3	Moderate	852	707.73	70.65973445	22.55748778
126	65	3	10	19	U-16	54.6	58.2	3.6	Bypass Diode	IEC3	Moderate	852	707.73	70.66018846	22.55743106
127	67	3	12	22	L-24	45.2	56.4	11.2	Bypass Diode	IEC3	Moderate	852	707.73	70.66052023	22.55727161
128	67	3	4	7	U-9	45.8	52.3	6.5	Bypass Diode	IEC3	Moderate	852	707.73	70.66069056	22.55728793
129	67	3	10	19	U-3	48.1	54.8	6.7	Bypass Diode	IEC3	Moderate	852	707.73	70.66096202	22.55728384
130	67	3	9	18	L-23	42.9	52.3	9.4	Bypass Diode	IEC3	Moderate	852	707.73	70.66107206	22.55732993
131	65	3	8	16	L-27	45.9	51.9	6	Bypass Diode	IEC3	Moderate	852	707.73	70.66009925	22.55734652
132	22	1	12	24	U-13	45.3	55.2	9.9	Bypass Diode	IEC3	Moderate	852	924	70.65385923	22.55603287
133	23	1	11	24	L-1	45.6	54.9	9.3	Bypass Diode	IEC3	Moderate	852	924	70.65406299	22.55607945
134	23	1	11	24	U-6	45.2	53	7.8	Bypass Diode	IEC3	Moderate	852	924	70.65411889	22.55609746
135	23	1	12	25	L-10	42.3	54.2	11.9	Bypass Diode	IEC3	Moderate	852	924	70.654389	22.55614323
136	23	1	4	8	L-17	47.2	56.4	9.2	Bypass Diode	IEC3	Moderate	852	924	70.6544167	22.55627753
137	23	1	4	8	L-19	48.2	55.9	7.7	Bypass Diode	IEC3	Moderate	852	924	70.65443906	22.55627797
138	23	1	3	5	L-19	45.3	53.2	7.9	Bypass Diode	IEC3	Moderate	852	924	70.6544144	22.55634649
139	21	1	12	24	U-8	47.2	54.2	7	Bypass Diode	IEC3	Moderate	852	632	70.65544993	22.55621622
140	21	1	12	24	U-14	45.3	53	7.7	Bypass Diode	IEC3	Moderate	852	632	70.65551877	22.55621568
141	24	1	11	22	L-27	45.2	55.2	10	Bypass Diode	IEC3	Moderate	852	795	70.65583066	22.55626111
142	24	1	5	9	U-13	46	54.3	8.3	Bypass Diode	IEC3	Moderate	852	632	70.65533587	22.55628606
143	24	1	8	15	U-23	45.6	53.2	7.6	Bypass Diode	IEC3	Moderate	852	795	70.65576096	22.55648354
144	24	1	8	15	U-15	45.8	53.6	7.8	Bypass Diode	IEC3	Moderate	852	795	70.65567013	22.55648397

FID	INV_No	ICR_No	M_No	String No	Module No	Minimum Temp	Maximum Temp	Delta Temp	Anomalies Type	IEC_Category	Severity	Count	Irradiation	Long	Lat
145	25	2	11	21	U-2	45.3	53.2	7.9	Bypass Diode	IEC3	Moderate	852	795	70.65620213	22.55647746
146	25	2	11	21	U-2	45.2	53.8	8.6	Bypass Diode	IEC3	Moderate	852	795	70.65625798	22.55647621
147	25	2	11	22	L-14	47.5	58.6	11.1	Bypass Diode	IEC3	Moderate	852	795	70.65633688	22.55645715
148	25	2	11	22	L-11	45.7	58.4	12.7	Bypass Diode	IEC3	Moderate	852	795	70.65630228	22.55645768
149	26	2	7	13	U-25	45.2	54.2	9	Bypass Diode	IEC3	Moderate	852	824	70.65679748	22.55646902
150	26	2	6	12	L-17	45.6	52.6	7	Bypass Diode	IEC3	Moderate	852	824	70.65668181	22.55652006
151	26	2	5	9	U-5	45.3	53.8	8.5	Bypass Diode	IEC3	Moderate	852	795	70.65652272	22.55660873
152	24	1	7	13	U-17	45.8	53.9	8.1	Bypass Diode	IEC3	Moderate	852	795	70.6556681	22.55655166
153	24	1	7	14	L-6	45.7	53.1	7.4	Bypass Diode	IEC3	Moderate	852	632	70.65554359	22.55653517
154	24	1	7	14	L-4	45.9	53.4	7.5	Bypass Diode	IEC3	Moderate	852	632	70.65552236	22.55653396
155	24	1	1	2	L-2	45.3	53.8	8.5	Bypass Diode	IEC3	Moderate	852	632	70.65516001	22.5565388
156	24	1	1	1	U-5	45.2	54.6	9.4	Bypass Diode	IEC3	Moderate	852	632	70.65519505	22.55655761
157	20	1	12	23	U-1	45.6	54.8	9.2	Bypass Diode	IEC3	Moderate	852	924	70.65483786	22.55649532
158	23	1	6	12	L-24	46.2	54.2	8	Bypass Diode	IEC3	Moderate	852	924	70.65475802	22.55647749
159	23	1	10	19	U-1	46.1	54.9	8.8	Bypass Diode	IEC3	Moderate	852	924	70.65486178	22.55642689
160	23	1	6	12	L-13	46.8	54.6	7.8	Bypass Diode	IEC3	Moderate	852	924	70.65463398	22.55647891
161	26	1	6	12	L-8	46.9	54.8	7.9	Bypass Diode	IEC3	Moderate	852	924	70.65457741	22.55647823
162	22	1	1	1	U-4	46.1	54.3	8.2	Bypass Diode	IEC3	Moderate	852	924	70.65351944	22.55650878
163	19	1	11	21	U-5	46.2	54.6	8.4	Bypass Diode	IEC3	Moderate	852	924	70.65384278	22.55657248
164	19	1	11	21	U-20	46.3	54.2	7.9	Bypass Diode	IEC3	Moderate	852	924	70.6540113	22.55657047
165	19	1	11	21	U-23	46.8	52.3	5.5	Bypass Diode	IEC3	Moderate	852	924	70.65404501	22.55657046
166	20	1	41	7	U-15	45.8	54.6	8.8	Bypass Diode	IEC3	Moderate	852	924	70.65429273	22.55656768
167	19	1	5	9	U-19	45.1	54.2	9.1	Bypass Diode	IEC3	Moderate	852	924	70.65363615	22.55664171
168	19	1	5	9	U-20	45.9	54.6	8.7	Bypass Diode	IEC3	Moderate	852	924	70.65364891	22.55664185
169	19	1	4	7	U-27	45.2	54.8	9.6	Bypass Diode	IEC3	Moderate	852	924	70.65370237	22.55670865
170	19	1	4	7	U-29	45.6	54.6	9	Bypass Diode	IEC3	Moderate	852	924	70.65372378	22.55670869
171	20	1	10	20	L-14	45.3	54.1	8.8	Bypass Diode	IEC3	Moderate	852	924	70.65493237	22.55660869
172	20	1	10	20	L-13	45.6	54.6	9	Bypass Diode	IEC3	Moderate	852	924	70.65492077	22.55660943
173	26	2	11	21	U-24	45.2	53.6	8.4	Bypass Diode	IEC3	Moderate	852	824	70.65709966	22.55653287
174	26	2	11	21	U-23	45.6	53.8	8.2	Bypass Diode	IEC3	Moderate	852	824	70.65708821	22.55653277
175	26	2	11	21	U-20	45.3	53.9	8.6	Bypass Diode	IEC3	Moderate	852	824	70.65705319	22.55653547
176	17	1	7	13	U-10	45.8	54.1	8.3	Bypass Diode	IEC3	Moderate	852	924	70.6548361	22.55676468
177	21	1	7	13	U-14	45.1	53.6	8.5	Bypass Diode	IEC3	Moderate	852	632	70.65555837	22.55675385
178	21	1	7	14	L-18	45.8	53.1	7.3	Bypass Diode	IEC3	Moderate	852	795	70.65560239	22.55673501
179	25	2	1	1	U-2	45.9	52.9	7	Bypass Diode	IEC3	Moderate	852	795	70.65578608	22.55668518
180	25	2	1	1	U-8	45.6	54	8.4	Bypass Diode	IEC3	Moderate	852	795	70.65585432	22.55668384

FID	INV_No	ICR_No	M_No	String No	Module No	Minimum Temp	Maximum Temp	Delta Temp	Anomalies Type	IEC_Category	Severity	Count	Irradiation	Long	Lat
181	25	2	8	16	L-8	45.2	52.6	7.4	Bypass Diode	IEC3	Moderate	852	795	70.65619163	22.55665939
182	27	2	7	13	U-27	45.8	52	6.2	Bypass Diode	IEC3	Moderate	852	795	70.65638057	22.55674476
183	28	2	12	23	U-11	45.6	54.3	8.7	Bypass Diode	IEC3	Moderate	852	824	70.65685288	22.5568056
184	28	2	12	23	U-6	45.2	53.2	8	Bypass Diode	IEC3	Moderate	852	824	70.65679654	22.55680682
185	28	2	6	11	U-13	44.5	53.6	9.1	Bypass Diode	IEC3	Moderate	852	824	70.6568497	22.55687234
186	26	2	2	4	L-20	48.2	53.4	5.2	Bypass Diode	IEC3	Moderate	852	824	70.65661475	22.55679008
187	27	2	6	11	U-21	48.6	53.9	5.3	Bypass Diode	IEC3	Moderate	852	795	70.65628869	22.55681337
188	21	1	11	21	U-26	48.5	53.2	4.7	Bypass Diode	IEC3	Moderate	852	795	70.65600571	22.55681766
189	21	1	10	19	U-28	48.4	53.2	4.8	Bypass Diode	IEC3	Moderate	852	795	70.65600348	22.55688522
190	21	1	10	19	U-22	48.1	53.2	5.1	Bypass Diode	IEC3	Moderate	852	795	70.65593564	22.55688483
191	21	1	10	19	U-17	47.8	53.4	5.6	Bypass Diode	IEC3	Moderate	852	795	70.65587831	22.55688623
192	21	1	6	12	L-6	47.2	53.8	6.6	Bypass Diode	IEC3	Moderate	852	632	70.6554419	22.55680519
193	21	1	5	10	L-8	47.6	53.4	5.8	Bypass Diode	IEC3	Moderate	852	632	70.6554398	22.55687281
194	21	1	1	1	U-14	47.1	53.2	6.1	Bypass Diode	IEC3	Moderate	852	632	70.65516903	22.55689479
195	21	1	1	1	U-6	47.6	53.8	6.2	Bypass Diode	IEC3	Moderate	852	632	70.65507938	22.55689653
196	17	1	6	12	L-12	47.1	53.6	6.5	Bypass Diode	IEC3	Moderate	852	924	70.65483405	22.55681249
197	17	1	6	11	U-6	46.9	53.4	6.5	Bypass Diode	IEC3	Moderate	852	924	70.65476738	22.55683062
198	16	1	11	22	L-27	46.8	53.3	6.5	Bypass Diode	IEC3	Moderate	852	924	70.65466596	22.55681571
199	16	1	10	20	L-17	46.2	54.1	7.9	Bypass Diode	IEC3	Moderate	852	924	70.65452411	22.55688387
200	16	1	5	9	U-4	46.3	54.6	8.3	Bypass Diode	IEC3	Moderate	852	924	70.65404288	22.55690748
201	19	1	7	14	L-4	46.8	54.2	7.4	Bypass Diode	IEC3	Moderate	852	924	70.65372992	22.55682523
202	19	1	7	14	L-3	46.2	54.9	8.7	Bypass Diode	IEC3	Moderate	852	924	70.65371962	22.55682555
203	19	1	1	2	L-26	46.1	54.6	8.5	Bypass Diode	IEC3	Moderate	852	924	70.65361321	22.5568923
204	19	1	1	1	U-21	46.8	54.6	7.8	Bypass Diode	IEC3	Moderate	852	924	70.65355847	22.55691243
205	15	1	9	17	U-11	46.9	54.8	7.9	Bypass Diode	IEC3	Moderate	852	924	70.65373163	22.55704487
206	16	1	18	15	U-11	46.4	54.3	7.9	Bypass Diode	IEC3	Moderate	852	924	70.65440798	22.55703659
207	16	1	8	15	U-7	46.8	54.6	7.8	Bypass Diode	IEC3	Moderate	852	924	70.65436359	22.55704002
208	16	1	8	16	L-9	46.2	54.9	8.7	Bypass Diode	IEC3	Moderate	852	924	70.65438604	22.55702107
209	16	1	8	16	L-5	46.8	54.3	7.5	Bypass Diode	IEC3	Moderate	852	924	70.65434045	22.5570209
210	16	1	8	16	L-4	46.1	54.7	8.6	Bypass Diode	IEC3	Moderate	852	924	70.65432947	22.55702165
211	17	1	3	6	L-25	46.8	54.4	7.6	Bypass Diode	IEC3	Moderate	852	924	70.65490339	22.55701403
212	17	1	10	19	U-8	46.5	54.6	8.1	Bypass Diode	IEC3	Moderate	852	632	70.65505122	22.5570315
213	17	1	11	22	L-26	46.2	54.7	8.5	Bypass Diode	IEC3	Moderate	852	632	70.65527761	22.55694254
214	18	1	6	12	L-3	46.1	53.9	7.8	Bypass Diode	IEC3	Moderate	852	632	70.65535853	22.55694155
215	18	1	6	12	L-6	46.3	52.1	5.8	Bypass Diode	IEC3	Moderate	852	632	70.65539115	22.55694172
216	18	1	6	12	L-16	48.3	52.9	4.6	Bypass Diode	IEC3	Moderate	852	632	70.65550317	22.55693974

FID	INV_No	ICR_No	M_No	String No	Module No	Minimum Temp	Maximum Temp	Delta Temp	Anomalies Type	IEC_Category	Severity	Count	Irradiation	Long	Lat
217	18	1	6	11	U-24	45.2	51.4	6.2	Bypass Diode	IEC3	Moderate	852	795	70.65559402	22.55695622
218	21	1	9	18	L-4	45.6	52.6	7	Bypass Diode	IEC3	Moderate	852	795	70.65570712	22.55693679
219	27	2	11	22	L-8	45.2	52.3	7.1	Bypass Diode	IEC3	Moderate	852	795	70.65642977	22.55692687
220	27	2	11	22	L-14	46.1	52.6	6.5	Bypass Diode	IEC3	Moderate	852	795	70.6564974	22.55692565
221	27	2	11	22	L-15	45.9	53.2	7.3	Bypass Diode	IEC3	Moderate	852	795	70.65650846	22.5569258
222	27	2	11	22	L-16	45.8	53.6	7.8	Bypass Diode	IEC3	Moderate	852	795	70.65651796	22.55692583
223	28	2	5	9	U-23	45.2	53.8	8.6	Bypass Diode	IEC3	Moderate	852	824	70.65693644	22.55693871
224	27	2	10	20	L-19	45.3	54.2	8.9	Bypass Diode	IEC3	Moderate	852	795	70.65652777	22.5569926
225	17	2	3	5	U-7	45.6	54.6	9	Bypass Diode	IEC3	Moderate	852	795	70.65605394	22.55701887
226	18	1	5	9	U-18	45.6	54	8.4	Bypass Diode	IEC3	Moderate	852	632	70.65550208	22.55702552
227	18	1	5	10	L-17	45.8	52.3	6.5	Bypass Diode	IEC3	Moderate	852	632	70.65549051	22.55700722
228	18	1	5	10	L-13	45.7	54.2	8.5	Bypass Diode	IEC3	Moderate	852	632	70.65544492	22.55700752
229	17	1	2	3	U-30	45.6	54.1	8.5	Bypass Diode	IEC3	Moderate	852	924	70.65493459	22.55710033
230	16	1	2	3	U-4	45.8	54.3	8.5	Bypass Diode	IEC3	Moderate	852	924	70.65396659	22.5571109
231	15	1	8	16	L-3	45.2	54.2	9	Bypass Diode	IEC3	Moderate	852	924	70.65361755	22.55709493
232	15	1	3	5	U-23	45.3	54.8	9.5	Bypass Diode	IEC3	Moderate	852	924	70.65350304	22.55711547
233	15	1	3	5	U-19	45.3	54.6	9.3	Bypass Diode	IEC3	Moderate	852	924	70.65345906	22.55711529
234	15	1	2	4	L-21	45.2	54.8	9.6	Bypass Diode	IEC3	Moderate	852	924	70.65345506	22.55716405
235	15	1	1	2	L-24	45.6	54.2	8.6	Bypass Diode	IEC3	Moderate	852	924	70.653465	22.55723078
236	16	1	1	2	L-2	45.6	54.3	8.7	Bypass Diode	IEC3	Moderate	852	924	70.65391819	22.55715965
237	16	1	1	1	U-2	46.5	54.6	8.1	Bypass Diode	IEC3	Moderate	852	924	70.65391842	22.55717873
238	16	1	1	1	U-30	46.2	54.9	8.7	Bypass Diode	IEC3	Moderate	852	924	70.65423331	22.55717561
239	16	1	1	1	U-25	46.5	57.6	11.1	Bypass Diode	IEC3	Moderate	852	924	70.65417638	22.55717703
240	17	1	1	1	U-2	46.8	57.3	10.5	Bypass Diode	IEC3	Moderate	852	924	70.65459482	22.55717126
241	17	1	1	1	U-22	46.2	57.6	11.4	Bypass Diode	IEC3	Moderate	852	924	70.65481946	22.55716905
242	13	1	12	23	L-27	46.1	57.6	11.5	Bypass Diode	IEC3	Moderate	852	924	70.65484908	22.55721632
243	14	1	10	19	U-3	46.9	57.2	10.3	Bypass Diode	IEC3	Moderate	852	924	70.65491864	22.55723457
244	18	1	3	5	U-5	46.9	57.6	10.7	Bypass Diode	IEC3	Moderate	852	632	70.65530494	22.55716196
245	18	1	2	4	L-19	45.8	57.6	11.8	Bypass Diode	IEC3	Moderate	852	632	70.65543607	22.55720965
246	18	1	4	8	L-28	45.9	57.6	11.7	Bypass Diode	IEC3	Moderate	852	795	70.65558736	22.55707239
247	18	1	9	17	U-15	45.8	57.4	11.6	Bypass Diode	IEC3	Moderate	852	795	70.65575529	22.55715629
248	18	1	10	20	L-19	45.2	56.9	11.7	Bypass Diode	IEC3	Moderate	852	795	70.65582573	22.55706878
249	18	1	10	20	L-21	45.3	56.8	11.5	Bypass Diode	IEC3	Moderate	852	795	70.65584754	22.55706956
250	18	1	9	18	L-30	46.2	54.8	8.6	Bypass Diode	IEC3	Moderate	852	795	70.65592358	22.55713484
251	27	2	2	4	L-12	46.3	54.1	7.8	Bypass Diode	IEC3	Moderate	852	795	70.6560859	22.5570661
252	27	2	9	17	U-6	46.8	54.2	7.4	Bypass Diode	IEC3	Moderate	852	795	70.65635515	22.55708128

FID	INV_No	ICR_No	M_No	String No	Module No	Minimum Temp	Maximum Temp	Delta Temp	Anomalies Type	IEC_Category	Severity	Count	Irradiation	Long	Lat
253	27	2	9	17	U-15	46.9	54.3	7.4	Bypass Diode	IEC3	Moderate	852	795	70.65645678	22.55707989
254	28	2	3	5	U-7	46.8	54.8	8	Bypass Diode	IEC3	Moderate	852	824	70.65670515	22.55707645
255	28	2	7	14	L-1	46.2	54.6	8.4	Bypass Diode	IEC3	Moderate	852	824	70.65658806	22.5571942
256	28	2	1	1	U-2	48.2	54.9	6.7	Bypass Diode	IEC3	Moderate	852	795	70.65626107	22.55721789
257	13	1	11	21	L-19	45.6	55.3	9.7	Bypass Diode	IEC3	Moderate	852	924	70.65442138	22.55722138
258	13	1	11	20	U-11	45.2	54.3	9.1	Bypass Diode	IEC3	Moderate	852	924	70.65433197	22.55724231
259	13	1	10	18	U-20	45.8	54.6	8.8	Bypass Diode	IEC3	Moderate	852	924	70.65409508	22.55724438
260	13	1	10	18	U-15	45.6	54.2	8.6	Bypass Diode	IEC3	Moderate	852	924	70.6540394	22.55724495
261	13	1	9	17	U-17	45.2	54.6	9.4	Bypass Diode	IEC3	Moderate	852	924	70.65369797	22.55731554
262	13	1	19	17	L-18	45	54.8	9.8	Bypass Diode	IEC3	Moderate	852	924	70.65370837	22.55729585
263	13	1	9	17	L-22	45.6	54.9	9.3	Bypass Diode	IEC3	Moderate	852	924	70.65375378	22.55729588
264	13	1	3	5	U-3	45.1	54.2	9.1	Bypass Diode	IEC3	Moderate	852	924	70.6538542	22.55738109
265	13	1	4	7	U-25	45.8	54.6	8.8	Bypass Diode	IEC3	Moderate	852	924	70.65443848	22.55737542
266	13	1	4	7	U-22	45.6	54.8	9.2	Bypass Diode	IEC3	Moderate	852	924	70.65440482	22.5573764
267	13	1	4	18	L-18	45.3	54.2	8.9	Bypass Diode	IEC3	Moderate	852	924	70.65435994	22.55735793
268	13	1	4	8	L-15	47.6	54.7	7.1	Bypass Diode	IEC3	Moderate	852	924	70.65432535	22.55735807
269	13	1	5	10	L-11	47.6	56.2	8.6	Bypass Diode	IEC3	Moderate	852	924	70.65461937	22.55735393
270	13	1	5	9	U-18	47.5	56.8	9.3	Bypass Diode	IEC3	Moderate	852	924	70.65469815	22.55737248
271	18	1	1	1	U-22	47.2	56.2	9	Bypass Diode	IEC3	Moderate	852	632	70.65544547	22.55729565
272	18	1	1	1	U-17	47.3	56.1	8.8	Bypass Diode	IEC3	Moderate	852	632	70.65538935	22.55729623
273	14	1	11	22	L-11	45.6	54	8.4	Bypass Diode	IEC3	Moderate	852	632	70.6552949	22.55734698
274	18	1	1	2	L-6	45.8	55.3	9.5	Bypass Diode	IEC3	Moderate	852	632	70.65526339	22.55727859
275	14	1	12	23	U-12	45.2	55.2	10	Bypass Diode	IEC3	Moderate	852	795	70.65564615	22.55736062
276	18	1	12	23	L-11	45.3	55.3	10	Bypass Diode	IEC3	Moderate	852	795	70.65563272	22.55734101
277	18	1	12	23	L-10	45.3	55.4	10.1	Bypass Diode	IEC3	Moderate	852	795	70.65562139	22.55734178
278	14	1	12	23	U-22	45.9	55.4	9.5	Bypass Diode	IEC3	Moderate	852	795	70.65575802	22.55735971
279	31	2	7	13	U-22	47.3	52.8	5.5	Bypass Diode	IEC3	Moderate	852	795	70.65646091	22.55728094
280	31	2	7	13	U-19	47.6	52.7	5.1	Bypass Diode	IEC3	Moderate	852	795	70.65642658	22.557283
281	30	2	9	18	L-5	47	53.6	6.6	Bypass Diode	IEC3	Moderate	852	824	70.65680531	22.55739378
282	30	2	9	18	L-4	45.3	53.9	8.6	Bypass Diode	IEC3	Moderate	852	824	70.65679324	22.55739423
283	31	2	10	19	U-16	47.8	53	5.2	Bypass Diode	IEC3	Moderate	852	795	70.65625311	22.55741954
284	14	1	1	1	U-4	45.6	55.6	10	Bypass Diode	IEC3	Moderate	852	632	70.654961	22.5575695
285	14	1	3	6	L-28	45.8	55.8	10	Bypass Diode	IEC3	Moderate	852	632	70.65524446	22.55747998
286	14	1	4	7	U-8	45.6	55.4	9.8	Bypass Diode	IEC3	Moderate	852	632	70.65535901	22.55749873
287	14	1	4	7	U-18	45.6	54.3	8.7	Bypass Diode	IEC3	Moderate	852	632	70.65547035	22.5574969
288	12	1	11	21	U-26	45.3	54.8	9.5	Bypass Diode	IEC3	Moderate	852	795	70.65554736	22.55756312

FID	INV_No	ICR_No	M_No	String No	Module No	Minimum Temp	Maximum Temp	Delta Temp	Anomalies Type	IEC_Category	Severity	Count	Irradiation	Long	Lat
289	31	2	1	2	L-5	45.9	54.2	8.3	Bypass Diode	IEC3	Moderate	852	795	70.65566176	22.55747568
290	31	2	1	1	U-10	46.3	54.6	8.3	Bypass Diode	IEC3	Moderate	852	795	70.65571931	22.55749296
291	30	2	8	15	U-26	47.1	53.8	6.7	Bypass Diode	IEC3	Moderate	852	824	70.656915	22.55747829
292	32	2	11	21	U-23	45.6	53.6	8	Bypass Diode	IEC3	Moderate	852	795	70.65617979	22.55762203
293	33	2	9	17	U-17	45.6	53.1	7.5	Bypass Diode	IEC3	Moderate	852	824	70.65674825	22.55781674
294	33	2	2	4	U-5	45.2	53.8	8.6	Bypass Diode	IEC3	Moderate	852	795	70.65644438	22.55782176
295	33	2	2	4	L-4	45.9	53.4	7.5	Bypass Diode	IEC3	Moderate	852	795	70.65643194	22.55780351
296	11	1	10	20	L-9	46.8	54.6	7.8	Bypass Diode	IEC3	Moderate	852	924	70.65466782	22.55762175
297	11	1	10	20	L-6	46.2	54.2	8	Bypass Diode	IEC3	Moderate	852	924	70.65463179	22.5576238
298	11	1	9	18	L-13	46.3	54.8	8.5	Bypass Diode	IEC3	Moderate	852	924	70.65469822	22.55769056
299	11	1	9	17	U-27	46.4	54.2	7.8	Bypass Diode	IEC3	Moderate	852	924	70.65485665	22.55770745
300	11	1	9	17	U-30	45.2	54.1	8.9	Bypass Diode	IEC3	Moderate	852	924	70.65489093	22.55770601
301	12	1	5	9	U-3	45.6	54.6	9	Bypass Diode	IEC3	Moderate	852	924	70.65493582	22.55763845
302	12	1	5	10	L-4	45.8	54.8	9	Bypass Diode	IEC3	Moderate	852	632	70.6549484	22.55761939
303	12	1	5	9	U-7	45.2	54.2	9	Bypass Diode	IEC3	Moderate	852	632	70.65498297	22.55763796
304	12	1	5	9	U-11	45.6	54.9	9.3	Bypass Diode	IEC3	Moderate	852	632	70.65502751	22.55763804
305	12	1	5	10	L-15	46.2	56.8	10.6	Bypass Diode	IEC3	Moderate	852	632	70.65507299	22.55761865
306	12	1	4	8	L-6	46.2	54.2	8	Bypass Diode	IEC3	Moderate	852	632	70.65495767	22.55768675
307	32	2	4	8	L-2	46.3	55.8	9.5	Bypass Diode	IEC3	Moderate	852	795	70.65558991	22.5576787
308	12	1	9	17	U-26	46.7	55.3	8.6	Bypass Diode	IEC3	Moderate	852	795	70.65552239	22.55769899
309	32	2	4	8	L-29	45.6	53.8	8.2	Bypass Diode	IEC3	Moderate	852	795	70.65589312	22.55767464
310	32	2	4	8	L-27	45.2	53.1	7.9	Bypass Diode	IEC3	Moderate	852	795	70.65587102	22.55767606
311	33	2	3	5	U-7	45.1	53.6	8.5	Bypass Diode	IEC3	Moderate	852	795	70.65630963	22.55775524
312	33	2	5	5	U-5	45.8	53.4	7.6	Bypass Diode	IEC3	Moderate	852	795	70.65628674	22.55775633
313	32	2	9	17	U-30	45.1	53.2	8.1	Bypass Diode	IEC3	Moderate	852	795	70.65622993	22.55775649
314	33	2	10	20	L-9	45.6	54.6	9	Bypass Diode	IEC3	Moderate	852	824	70.65663249	22.5579343
315	33	2	3	20	L-6	45.8	54.2	8.4	Bypass Diode	IEC3	Moderate	852	824	70.65659728	22.5579352
316	33	2	2	3	U-10	46.2	53.6	7.4	Bypass Diode	IEC3	Moderate	852	795	70.65648868	22.55788773
317	33	2	12	23	U-30	47.6	52.6	5	Bypass Diode	IEC3	Moderate	852	795	70.65651721	22.55802234
318	33	2	12	23	U-27	47.5	52.9	5.4	Bypass Diode	IEC3	Moderate	852	795	70.65648286	22.55802334
319	10	1	11	22	L-7	45.2	55.6	10.4	Bypass Diode	IEC3	Moderate	852	795	70.65559379	22.55794923
320	10	1	11	22	L-6	45.2	55.2	10	Bypass Diode	IEC3	Moderate	852	795	70.65558302	22.55794913
321	12	1	6	11	U-25	45.6	55.6	10	Bypass Diode	IEC3	Moderate	852	795	70.65547223	22.55790107
322	12	1	6	12	L-17	45.2	55	9.8	Bypass Diode	IEC3	Moderate	852	632	70.65538201	22.55788455
323	12	1	7	13	U-18	45.8	54.2	8.4	Bypass Diode	IEC3	Moderate	852	632	70.65540638	22.55783473
324	12	1	8	16	L-23	45.3	54.2	8.9	Bypass Diode	IEC3	Moderate	852	795	70.65547322	22.55774917

FID	INV_No	ICR_No	M_No	String No	Module No	Minimum Temp	Maximum Temp	Delta Temp	Anomalies Type	IEC_Category	Severity	Count	Irradiation	Long	Lat
325	12	1	8	15	U-13	46.3	54.9	8.6	Bypass Diode	IEC3	Moderate	852	632	70.65536224	22.55776789
326	12	1	7	14	L-8	46.3	54.8	8.5	Bypass Diode	IEC3	Moderate	852	632	70.65529443	22.55781761
327	12	1	8	15	U-1	46.8	54.1	7.3	Bypass Diode	IEC3	Moderate	852	632	70.65522721	22.55777062
328	12	1	3	5	U-15	46.2	54.6	8.4	Bypass Diode	IEC3	Moderate	852	632	70.65504636	22.5577721
329	12	1	2	4	L-18	46.3	54.2	7.9	Bypass Diode	IEC3	Moderate	852	632	70.65506761	22.55782082
330	12	1	2	3	U-27	46.8	54.8	8	Bypass Diode	IEC3	Moderate	852	632	70.65516912	22.5578379
331	12	1	3	5	U-8	46.9	56	9.1	Bypass Diode	IEC3	Moderate	852	632	70.65496747	22.55777291
332	12	1	3	3	L-4	46.1	56	9.9	Bypass Diode	IEC3	Moderate	852	632	70.65492127	22.55775527
333	12	1	3	6	L-2	46.2	56.3	10.1	Bypass Diode	IEC3	Moderate	852	924	70.65490031	22.55775603
334	11	1	1	2	L-2	46.2	56.9	10.7	Bypass Diode	IEC3	Moderate	852	924	70.65421077	22.55783112
335	11	1	1	1	U-7	46.3	56.8	10.5	Bypass Diode	IEC3	Moderate	852	924	70.65426812	22.55784927
336	11	1	1	1	U-24	46.1	57.3	11.2	Bypass Diode	IEC3	Moderate	852	924	70.65445953	22.55784743
337	11	1	7	13	U-6	46.1	57.1	11	Bypass Diode	IEC3	Moderate	852	924	70.65459442	22.5578454
338	11	1	7	13	U-5	46.2	57.3	11.1	Bypass Diode	IEC3	Moderate	852	924	70.65458228	22.55784574
339	11	1	7	14	L-28	46.7	57.4	10.7	Bypass Diode	IEC3	Moderate	852	924	70.65484199	22.55782318
340	12	1	6	12	L-7	46.9	57.2	10.3	Bypass Diode	IEC3	Moderate	852	632	70.65526957	22.5578847
341	10	1	5	10	U-11	46.3	57.6	11.3	Bypass Diode	IEC3	Moderate	852	924	70.65463782	22.55791226
342	10	1	5	10	U-3	46.2	57.3	11.1	Bypass Diode	IEC3	Moderate	852	924	70.65454816	22.55791291
343	10	1	5	10	U-1	46.8	57.4	10.6	Bypass Diode	IEC3	Moderate	852	924	70.65452546	22.55791341
344	10	1	4	9	L-12	46.3	57.2	10.9	Bypass Diode	IEC3	Moderate	852	924	70.6546348	22.55796188
345	10	1	4	9	L-25	46.9	57.8	10.9	Bypass Diode	IEC3	Moderate	852	924	70.65478225	22.55795872
346	10	1	4	8	U-25	46.8	57.4	10.6	Bypass Diode	IEC3	Moderate	852	924	70.65478191	22.55797873
347	10	1	3	6	U-16	46.2	57.2	11	Bypass Diode	IEC3	Moderate	852	924	70.65466685	22.55804616
348	10	1	6	12	U-7	47.2	57.4	10.2	Bypass Diode	IEC3	Moderate	852	632	70.65490466	22.55804372
349	10	1	6	12	U-24	47.1	57.6	10.5	Bypass Diode	IEC3	Moderate	852	632	70.65509619	22.55804147
350	12	1	12	23	L-7	47.6	57.2	9.6	Bypass Diode	IEC3	Moderate	852	632	70.65525554	22.55795223
351	10	1	9	18	U-5	47.1	57.4	10.3	Bypass Diode	IEC3	Moderate	852	632	70.65523365	22.55797192
352	10	1	9	18	U-11	47.2	57.8	10.6	Bypass Diode	IEC3	Moderate	852	632	70.65530176	22.55797149
353	12	1	12	23	L-13	47.3	57.6	10.3	Bypass Diode	IEC3	Moderate	852	632	70.65532394	22.55795179
354	10	1	9	18	U-15	47.2	57.2	10	Bypass Diode	IEC3	Moderate	852	632	70.65534716	22.55797048
355	12	1	12	23	L-18	47.1	57.4	10.3	Bypass Diode	IEC3	Moderate	852	632	70.65538042	22.55795175
356	12	1	12	23	L-19	47.1	57.1	10	Bypass Diode	IEC3	Moderate	852	632	70.6553909	22.55795164
357	12	1	12	23	L-20	47.9	57.8	9.9	Bypass Diode	IEC3	Moderate	852	632	70.65540197	22.55795234
358	10	1	9	18	U-22	47.5	57.1	9.6	Bypass Diode	IEC3	Moderate	852	632	70.65542488	22.55796914
359	32	2	7	13	U-23	47.8	52.7	4.9	Bypass Diode	IEC3	Moderate	852	795	70.65610022	22.55802805
360	33	2	12	25	L-8	47.9	52.8	4.9	Bypass Diode	IEC3	Moderate	852	795	70.6560346	22.55814374

FID	INV_No	ICR_No	M_No	String No	Module No	Minimum Temp	Maximum Temp	Delta Temp	Anomalies Type	IEC_Category	Severity	Count	Irradiation	Long	Lat
361	10	1	8	16	U-16	47.6	55.6	8	Bypass Diode	IEC3	Moderate	852	632	70.65534387	22.55803677
362	29	2	12	24	L-29	47.8	53.1	5.3	Bypass Diode	IEC3	Moderate	852	824	70.65776538	22.55812197
363	33	2	11	22	L-30	45.6	53.6	8	Bypass Diode	IEC3	Moderate	852	824	70.65685496	22.55799945
364	34	2	1	2	L-5	45.2	52.9	7.7	Bypass Diode	IEC3	Moderate	852	824	70.65691244	22.55799853
365	34	2	1	2	L-13	45.3	52.8	7.5	Bypass Diode	IEC3	Moderate	852	824	70.65700236	22.5579976
366	34	2	1	2	L-15	45.6	51.9	6.3	Bypass Diode	IEC3	Moderate	852	824	70.65702507	22.55799737
367	34	2	2	4	L-21	45.2	51.2	6	Bypass Diode	IEC3	Moderate	852	824	70.65710625	22.55792857
368	34	3	2	4	L-23	45.1	51.8	6.7	Bypass Diode	IEC3	Moderate	852	824	70.65712877	22.55792833
369	34	2	6	11	U-11	45.6	51.6	6	Bypass Diode	IEC3	Moderate	852	824	70.65731864	22.55801213
370	34	2	7	14	L-25	45.8	52.3	6.5	Bypass Diode	IEC3	Moderate	852	824	70.65749122	22.5579239
371	34	2	8	16	L-26	45.1	54	8.9	Bypass Diode	IEC3	Moderate	852	824	70.65751334	22.55785541
372	34	2	8	16	L-16	47.2	54.1	6.9	Bypass Diode	IEC3	Moderate	852	824	70.65740037	22.55785775
373	34	2	9	17	U-19	46.9	53.7	6.8	Bypass Diode	IEC3	Moderate	852	824	70.65744897	22.55780736
374	34	2	11	22	L-10	46.2	58.1	11.9	Bypass Diode	IEC3	Moderate	852	824	70.65764753	22.55798846
375	34	2	12	23	L-15	46.3	57.6	11.3	Bypass Diode	IEC3	Moderate	852	824	70.65771565	22.55791968
376	57	2	4	8	L-8	46.8	58.3	11.5	Bypass Diode	IEC3	Moderate	852	824	70.65799051	22.55784823
377	57	2	2	4	L-16	49.5	56.2	6.7	Bypass Diode	IEC3	Moderate	852	824	70.65805327	22.55798228
378	57	2	2	4	L-19	48.2	57.2	9	Bypass Diode	IEC3	Moderate	852	824	70.65808645	22.55798207
379	57	2	5	9	U-17	45.5	56.2	10.7	Bypass Diode	IEC3	Moderate	852	796.72	70.65829148	22.55799836
380	57	2	5	10	L-11	47	54.3	7.3	Bypass Diode	IEC3	Moderate	852	796.72	70.6583363	22.55797864
381	57	2	5	9	U-13	45.1	56.9	11.8	Bypass Diode	IEC3	Moderate	852	796.72	70.65835832	22.5579965
382	57	2	5	9	U-16	48	58.2	10.2	Bypass Diode	IEC3	Moderate	852	796.72	70.65839332	22.55799692
383	57	2	11	22	L-9	48.6	55.4	6.8	Bypass Diode	IEC3	Moderate	852	796.72	70.65900429	22.55790292
384	59	3	8	5	L-11	47.6	53.6	6	Bypass Diode	IEC3	Moderate	852	796.72	70.65903955	22.55783363
385	59	3	8	15	L-2	48.5	54.8	6.3	Bypass Diode	IEC3	Moderate	852	796.72	70.65893791	22.55783639
386	57	2	10	19	U-20	48.3	52.6	4.3	Bypass Diode	IEC3	Moderate	852	796.72	70.65880069	22.55785685
387	58	3	2	3	U-3	48.6	55.3	6.7	Bypass Diode	IEC3	Moderate	852	796.72	70.65863426	22.55772355
388	58	3	8	16	L-30	47.8	56.2	8.4	Bypass Diode	IEC3	Moderate	852	796.72	70.6586007	22.55770565
389	58	3	8	15	U-20	48.5	54.3	5.8	Bypass Diode	IEC3	Moderate	852	796.72	70.65848874	22.55772682
390	57	2	6	11	U-11	45.7	58.2	12.5	Bypass Diode	IEC3	Moderate	852	796.72	70.65834835	22.55793092
391	58	3	5	9	U-28	45.8	54	8.2	Bypass Diode	IEC3	Moderate	852	824	70.65823847	22.55772974
392	58	3	4	7	U-19	46.8	59.2	12.4	Bypass Diode	IEC3	Moderate	852	824	70.65812464	22.55779855
393	58	3	5	10	L-18	45	58.2	13.2	Bypass Diode	IEC3	Moderate	852	824	70.65812547	22.55771309
394	58	3	5	10	L-12	45.6	54.6	9	Bypass Diode	IEC3	Moderate	852	824	70.65805855	22.55771431
395	58	3	5	9	U-6	47.2	53.2	6	Bypass Diode	IEC3	Moderate	852	824	70.65799133	22.55773302
396	58	3	2	3	U30	45.9	55.3	9.4	Bypass Diode	IEC3	Moderate	852	824	70.65792418	22.55773483

FID	INV_No	ICR_No	M_No	String No	Module No	Minimum Temp	Maximum Temp	Delta Temp	Anomalies Type	IEC_Category	Severity	Count	Irradiation	Long	Lat
397	58	3	2	4	L-21	47.3	53.8	6.5	Bypass Diode	IEC3	Moderate	852	824	70.6578223	22.55771628
398	60	3	1	1	U-20	48.9	54.6	5.7	Bypass Diode	IEC3	Moderate	852	824	70.65783717	22.55759938
399	60	3	1	2	L-26	45.6	58.1	12.5	Bypass Diode	IEC3	Moderate	852	824	70.65790464	22.55758062
400	60	3	2	3	U-29	47.8	56.7	8.9	Bypass Diode	IEC3	Moderate	852	824	70.65795128	22.55753172
401	60	3	6	11	U-30	48.9	55.4	6.5	Bypass Diode	IEC3	Moderate	852	824	70.65830032	22.55752668
402	58	3	11	21	L-26	49.5	58.6	9.1	Bypass Diode	IEC3	Moderate	852	796.72	70.65859522	22.55750347
403	59	3	5	10	L-4	47.6	52.3	4.7	Bypass Diode	IEC3	Moderate	852	796.72	70.65868461	22.55750355
404	59	3	11	21	L-5	48.5	53.6	5.1	Bypass Diode	IEC3	Moderate	852	796.72	70.65903643	22.55749727
405	58	3	9	17	U-8	47.6	55.3	7.7	Bypass Diode	IEC3	Moderate	852	796.72	70.65836496	22.55766056
406	58	3	3	5	U-13	45.1	54.3	9.2	Bypass Diode	IEC3	Moderate	852	824	70.65774467	22.55766882
407	58	3	3	6	L-3	45.6	54.6	9	Bypass Diode	IEC3	Moderate	852	824	70.65763135	22.55765234
408	34	2	10	19	U-19	45.3	54.2	8.9	Bypass Diode	IEC3	Moderate	852	824	70.65746023	22.55774037
409	34	2	5	10	L-17	45.8	54.8	9	Bypass Diode	IEC3	Moderate	852	824	70.65712556	22.55759132
410	34	2	3	5	U-4	45.9	54.9	9	Bypass Diode	IEC3	Moderate	852	824	70.65694014	22.55781629
411	34	2	4	7	U-3	45.2	55.3	10.1	Bypass Diode	IEC3	Moderate	852	824	70.65694223	22.55774731
412	34	2	4	7	U-4	45.6	54.6	9	Bypass Diode	IEC3	Moderate	852	824	70.65695358	22.55774693
413	34	2	3	6	L-13	45.8	52.8	7	Bypass Diode	IEC3	Moderate	852	824	70.65704149	22.55779469
414	29	2	2	4	L-26	47.8	54.8	7	Bypass Diode	IEC3	Moderate	852	824	70.65725399	22.55745469
415	29	2	2	3	U-11	45.3	58.5	13.2	Bypass Diode	IEC3	Moderate	852	824	70.65708649	22.55747539
416	33	2	9	17	U-27	47.5	54.2	6.7	Bypass Diode	IEC3	Moderate	852	824	70.65684978	22.55781611
417	57	3	12	22	U-28	48.2	54.9	6.7	Bypass Diode	IEC3	Moderate	852	796.72	70.65930841	22.55744496
418	59	3	7	13	L-23	48.9	58.1	9.2	Bypass Diode	IEC3	Moderate	852	796.72	70.65904058	22.55736264
419	64	3	5	9	U-2	48.2	56.5	8.3	Bypass Diode	IEC3	Moderate	852	796.72	70.65891897	22.55731588
420	64	3	6	11	U-7	48.6	58.5	9.9	Bypass Diode	IEC3	Moderate	852	796.72	70.65899827	22.55724725
421	64	3	6	12	L-21	47.5	54.6	7.1	Bypass Diode	IEC3	Moderate	852	796.72	70.65915624	22.55722648
422	60	3	11	22	L-14	48.5	52.6	4.1	Bypass Diode	IEC3	Moderate	852	796.72	70.65860027	22.5573686
423	60	3	11	21	U-3	46.7	51.2	4.5	Bypass Diode	IEC3	Moderate	852	796.72	70.65847612	22.55738936
424	60	3	10	19	U-9	47.5	53.5	6	Bypass Diode	IEC3	Moderate	852	796.72	70.65841693	22.55745784
425	60	3	7	13	U-29	48.5	55.6	7.1	Bypass Diode	IEC3	Moderate	852	824	70.65830457	22.55745798
426	60	3	7	13	U-23	47.5	54.8	7.3	Bypass Diode	IEC3	Moderate	852	824	70.65823688	22.55746036
427	60	3	7	13	U-22	49.1	53.6	4.5	Bypass Diode	IEC3	Moderate	852	824	70.65822572	22.55746047
428	29	2	2	19	U-16	47.9	54.8	6.9	Bypass Diode	IEC3	Moderate	852	824	70.65760644	22.55740216
429	61	3	7	14	L-12	46.7	54.9	8.2	Bypass Diode	IEC3	Moderate	852	824	70.6577259	22.55717939
430	63	3	1	2	L-4	45.6	52.8	7.2	Bypass Diode	IEC3	Moderate	852	824	70.65794903	22.5572432
431	63	3	1	2	L-14	47.5	56.3	8.8	Bypass Diode	IEC3	Moderate	852	824	70.65806161	22.55724203
432	63	3	1	2	L-17	48.7	53.6	4.9	Bypass Diode	IEC3	Moderate	852	824	70.65809508	22.55724222

FID	INV_No	ICR_No	M_No	String No	Module No	Minimum Temp	Maximum Temp	Delta Temp	Anomalies Type	IEC_Category	Severity	Count	Irradiation	Long	Lat
433	60	3	5	10	L-25	45.2	55.2	10	Bypass Diode	IEC3	Moderate	852	824	70.65816151	22.5573079
434	63	3	6	12	L-2	48.6	58.9	10.3	Bypass Diode	IEC3	Moderate	852	824	70.65826518	22.55723768
435	63	3	7	14	L-8	48.7	57.3	8.6	Bypass Diode	IEC3	Moderate	852	824	70.65835857	22.55717039
436	63	3	7	14	L-23	48.2	58	9.8	Bypass Diode	IEC3	Moderate	852	796.72	70.65852664	22.55716715
437	63	3	8	15	U-25	48.5	54.2	5.7	Bypass Diode	IEC3	Moderate	852	796.72	70.65857677	22.55711922
438	63	3	8	16	L-23	48.6	55.2	6.6	Bypass Diode	IEC3	Moderate	852	796.72	70.65855215	22.55710038
439	63	3	8	15	U-29	48.1	53.4	5.3	Bypass Diode	IEC3	Moderate	852	796.72	70.65861944	22.55711839
440	64	3	4	8	L-1	47.6	57.6	10	Bypass Diode	IEC3	Moderate	852	796.72	70.65898293	22.55709306
441	64	3	4	7	U-4	48.9	54.6	5.7	Bypass Diode	IEC3	Moderate	852	796.72	70.65901537	22.55711207
442	64	3	4	8	L-14	48.3	52.8	4.5	Bypass Diode	IEC3	Moderate	852	796.72	70.65912957	22.5570913
443	63	3	9	18	L-11	48.6	56.8	8.2	Bypass Diode	IEC3	Moderate	852	796.72	70.65844171	22.55703434
444	63	3	9	18	L-29	48.6	54.8	6.2	Bypass Diode	IEC3	Moderate	852	796.72	70.65864411	22.55703172
445	63	3	10	20	L-28	47.8	53.4	5.6	Bypass Diode	IEC3	Moderate	852	796.72	70.65865947	22.55696312
446	63	3	10	20	L-9	48.2	53.3	5.1	Bypass Diode	IEC3	Moderate	852	796.72	70.65844657	22.55696712
447	62	3	12	23	L-28	45.2	53.2	8	Bypass Diode	IEC3	Moderate	852	824	70.65834533	22.5569009
448	62	3	12	23	L-26	44.2	53.6	9.4	Bypass Diode	IEC3	Moderate	852	824	70.65832364	22.55690165
449	62	3	12	23	L-21	44.5	53.2	8.7	Bypass Diode	IEC3	Moderate	852	824	70.6582675	22.55690262
450	62	3	12	23	L-19	45.2	53.4	8.2	Bypass Diode	IEC3	Moderate	852	824	70.65824495	22.55690259
451	63	3	5	10	L-13	45.6	53.7	8.1	Bypass Diode	IEC3	Moderate	852	824	70.65815304	22.55697119
452	61	3	11	21	U-29	45.9	53.9	8	Bypass Diode	IEC3	Moderate	852	824	70.65802004	22.55692426
453	62	3	9	18	L-24	45.8	53.7	7.9	Bypass Diode	IEC3	Moderate	852	824	70.65798847	22.55683845
454	62	3	4	8	L-24	45.2	53.6	8.4	Bypass Diode	IEC3	Moderate	852	824	70.65738801	22.55664524
455	62	3	5	10	L-24	45.6	53.7	8.1	Bypass Diode	IEC3	Moderate	852	824	70.65741247	22.55657784
456	62	3	4	7	U-16	45.9	53.1	7.2	Bypass Diode	IEC3	Moderate	852	824	70.65729745	22.5566654
457	62	3	1	1	U-16	45.2	52.9	7.7	Bypass Diode	IEC3	Moderate	852	824	70.65722163	22.55686783
458	28	2	9	18	L-25	45.8	53.6	7.8	Bypass Diode	IEC3	Moderate	852	824	70.65724653	22.55705135
459	61	3	3	5	U-12	45.9	53.2	7.3	Bypass Diode	IEC3	Moderate	852	824	70.657438	22.55706687
460	61	3	9	18	L-5	45.6	53.1	7.5	Bypass Diode	IEC3	Moderate	852	824	70.65769833	22.55704496
461	61	3	9	17	U-8	45.2	53.8	8.6	Bypass Diode	IEC3	Moderate	852	824	70.65773267	22.55706227
462	73	3	11	21	U-4	43.4	53.1	9.7	Bypass Diode	IEC3	Moderate	852	707.73	70.66115803	22.55653805
463	70	3	10	19	U-7	45.2	54.1	8.9	Bypass Diode	IEC3	Moderate	852	707.73	70.66112706	22.55680836
464	70	3	10	19	U-11	45.6	55.5	9.9	Bypass Diode	IEC3	Moderate	852	707.73	70.66117209	22.55680729
465	69	3	8	16	L-27	45.2	55.3	10.1	Bypass Diode	IEC3	Moderate	852	707.73	70.66098239	22.55692709
466	3	1	12	24	U-15	45.6	55.2	9.6	Bypass Diode	IEC3	Moderate	852	924	70.6538763	22.56028156
467	3	1	12	25	L-18	46.9	55.3	8.4	Bypass Diode	IEC3	Moderate	852	924	70.65390869	22.56026252
468	1	1	1	2	L-15	46.2	54.2	8	Bypass Diode	IEC3	Moderate	852	924	70.65390118	22.56012788

FID	INV_No	ICR_No	M_No	String No	Module No	Minimum Temp	Maximum Temp	Delta Temp	Anomalies Type	IEC_Category	Severity	Count	Irradiation	Long	Lat
469	1	1	2	4	L-21	45.3	54.8	9.5	Bypass Diode	IEC3	Moderate	852	924	70.653982	22.56005884
470	1	1	2	3	U-3	46.3	54.6	8.3	Bypass Diode	IEC3	Moderate	852	924	70.65378088	22.56007922
471	1	1	8	16	L-2	46.8	54.2	7.4	Bypass Diode	IEC3	Moderate	852	924	70.65410793	22.56005785
472	1	1	8	16	L-5	45.2	54.1	8.9	Bypass Diode	IEC3	Moderate	852	924	70.65414234	22.56005732
473	1	1	8	16	L-19	45.3	54.2	8.9	Bypass Diode	IEC3	Moderate	852	924	70.65429822	22.56005522
474	2	1	2	4	L-18	45	54.3	9.3	Bypass Diode	IEC3	Moderate	852	632	70.65462726	22.56005137
475	2	1	2	4	L-25	45.9	54.8	8.9	Bypass Diode	IEC3	Moderate	852	632	70.65470582	22.56005082
476	2	1	2	4	L-30	45.8	54.6	8.8	Bypass Diode	IEC3	Moderate	852	632	70.65476218	22.56004958
477	2	1	8	16	L-16	45.7	54.8	9.1	Bypass Diode	IEC3	Moderate	852	632	70.65494312	22.56004814
478	2	1	3	5	U-21	45.8	54.9	9.1	Bypass Diode	IEC3	Moderate	852	632	70.65501299	22.55999859
479	2	1	3	5	U-24	45.3	54.2	8.9	Bypass Diode	IEC3	Moderate	852	632	70.65504715	22.55999745
480	2	1	3	6	L-16	45.6	54.6	9	Bypass Diode	IEC3	Moderate	852	632	70.65495576	22.55998035
481	1	1	9	18	L-30	45.2	55.6	10.4	Bypass Diode	IEC3	Moderate	852	632	70.65475375	22.55998232
482	1	1	9	18	L-15	46	55.1	9.1	Bypass Diode	IEC3	Moderate	852	632	70.65460747	22.55998404
483	8	1	5	10	L-6	45	54.2	9.2	Bypass Diode	IEC3	Moderate	852	924	70.6541611	22.55830307
484	8	1	5	10	L-20	46.8	54.9	8.1	Bypass Diode	IEC3	Moderate	852	924	70.65431834	22.55830249
485	8	1	11	22	L-5	46.2	54.9	8.7	Bypass Diode	IEC3	Moderate	852	924	70.65448887	22.55829936
486	8	1	12	23	U-6	46.3	54.8	8.5	Bypass Diode	IEC3	Moderate	852	632	70.65483942	22.55831327
487	8	1	12	23	U-11	47	54.1	7.1	Bypass Diode	IEC3	Moderate	852	632	70.65489567	22.55831338
488	36	2	9	17	U-2	45.6	53.9	8.3	Bypass Diode	IEC3	Moderate	852	795	70.65547092	22.55830574
489	36	2	3	17	L-25	46.5	54.1	7.6	Bypass Diode	IEC3	Moderate	852	795	70.65572862	22.55828265
490	36	2	5	9	U-16	44.6	54.3	9.7	Bypass Diode	IEC3	Moderate	852	795	70.65596639	22.55830075
491	36	2	5	9	U-28	45.3	53.8	8.5	Bypass Diode	IEC3	Moderate	852	795	70.65610187	22.55829744
492	36	2	5	9	U-30	45.6	53.9	8.3	Bypass Diode	IEC3	Moderate	852	795	70.65612456	22.55829827
493	35	2	4	7	U-1	45.2	52.8	7.6	Bypass Diode	IEC3	Moderate	852	795	70.65613692	22.55829793
494	35	2	4	8	L-7	45.6	52.1	6.5	Bypass Diode	IEC3	Moderate	852	795	70.65620287	22.55827662
495	35	2	2	4	L-15	45.9	54.6	8.7	Bypass Diode	IEC3	Moderate	852	824	70.6566059	22.55840569
496	36	2	2	4	L-6	45.6	53.6	8	Bypass Diode	IEC3	Moderate	852	795	70.65617938	22.55834472
497	36	2	3	5	U-30	46.5	54	7.5	Bypass Diode	IEC3	Moderate	852	795	70.65609747	22.55843323
498	36	2	3	5	U-25	45.7	53	7.3	Bypass Diode	IEC3	Moderate	852	795	70.65604114	22.55843445
499	36	2	4	7	U-12	45.8	54.6	8.8	Bypass Diode	IEC3	Moderate	852	795	70.65590845	22.55836746
500	36	2	3	6	L-2	45.2	55.6	10.4	Bypass Diode	IEC3	Moderate	852	795	70.65578185	22.55841793
501	36	2	8	15	U-25	45.3	56.1	10.8	Bypass Diode	IEC3	Moderate	852	795	70.65571601	22.55836987
502	36	2	7	14	L-23	45.9	56.2	10.3	Bypass Diode	IEC3	Moderate	852	795	70.65567902	22.55841855
503	36	2	7	14	L-13	45.1	56.8	11.7	Bypass Diode	IEC3	Moderate	852	795	70.65556658	22.55842056
504	36	2	7	14	L-2	46.8	56.3	9.5	Bypass Diode	IEC3	Moderate	852	795	70.65544313	22.55842204

FID	INV_No	ICR_No	M_No	String No	Module No	Minimum Temp	Maximum Temp	Delta Temp	Anomalies Type	IEC_Category	Severity	Count	Irradiation	Long	Lat
505	36	2	10	19	U-27	48.2	56.7	8.5	Bypass Diode	IEC3	Moderate	852	632	70.65539949	22.55837377
506	9	1	11	21	U-29	45.2	56.3	11.1	Bypass Diode	IEC3	Moderate	852	795	70.65540899	22.55844069
507	9	1	11	22	L-24	45.6	56.8	11.2	Bypass Diode	IEC3	Moderate	852	632	70.65535244	22.55842361
508	9	1	11	21	U-15	45.8	56.2	10.4	Bypass Diode	IEC3	Moderate	852	632	70.65525169	22.55844329
509	9	1	11	22	L-5	46.5	56.8	10.3	Bypass Diode	IEC3	Moderate	852	632	70.65513924	22.55842551
510	36	2	10	20	L-7	46.8	56.1	9.3	Bypass Diode	IEC3	Moderate	852	632	70.65517417	22.55835835
511	9	1	6	11	U-29	46.7	56.8	10.1	Bypass Diode	IEC3	Moderate	852	632	70.65508435	22.5583782
512	9	1	6	11	U-30	46.2	56.1	9.9	Bypass Diode	IEC3	Moderate	852	632	70.655096	22.55837839
513	8	1	12	20	L-26	46.3	56.2	9.9	Bypass Diode	IEC3	Moderate	852	924	70.65471285	22.55836451
514	8	1	12	20	L-1	46.5	56.8	10.3	Bypass Diode	IEC3	Moderate	852	924	70.65442957	22.55836704
515	8	1	3	5	U-18	46.2	55.2	9	Bypass Diode	IEC3	Moderate	852	924	70.65427031	22.55845567
516	8	1	3	6	U-20	46.5	55.2	8.7	Bypass Diode	IEC3	Moderate	852	924	70.65429214	22.55845517
517	8	1	3	6	L-26	46.5	55.6	9.1	Bypass Diode	IEC3	Moderate	852	924	70.65435974	22.55843582
518	8	1	9	17	U-12	46.5	55.9	9.4	Bypass Diode	IEC3	Moderate	852	924	70.65454044	22.55845289
519	8	1	9	18	L-16	46.3	53.8	7.5	Bypass Diode	IEC3	Moderate	852	924	70.65458561	22.55843241
520	8	1	9	17	U-18	46.2	55.2	9	Bypass Diode	IEC3	Moderate	852	924	70.65461001	22.5584519
521	8	1	9	17	U-23	46.2	56.4	10.2	Bypass Diode	IEC3	Moderate	852	924	70.6546653	22.55845025
522	8	1	9	17	U-25	46.1	58.7	12.6	Bypass Diode	IEC3	Moderate	852	924	70.65468771	22.55845002
523	9	1	4	7	U-4	46.8	57.6	10.8	Bypass Diode	IEC3	Moderate	852	924	70.65477642	22.55851643
524	9	1	4	8	L-9	46.7	57.8	11.1	Bypass Diode	IEC3	Moderate	852	632	70.65483181	22.55849829
525	9	1	4	8	L-25	46.8	57.4	10.6	Bypass Diode	IEC3	Moderate	852	632	70.65501197	22.55849481
526	9	1	10	19	U-3	46.2	57.4	11.2	Bypass Diode	IEC3	Moderate	852	632	70.65510331	22.55851253
527	9	1	10	20	L-18	46.5	57.1	10.6	Bypass Diode	IEC3	Moderate	852	632	70.65527278	22.55849132
528	9	1	10	19	U-26	46.3	57.6	11.3	Bypass Diode	IEC3	Moderate	852	632	70.65536237	22.55850986
529	37	2	11	22	L-20	45.9	56.2	10.3	Bypass Diode	IEC3	Moderate	852	795	70.65597168	22.55848269
530	37	2	11	22	L-25	45.2	56.8	11.6	Bypass Diode	IEC3	Moderate	852	795	70.65602791	22.55848228
531	38	2	4	8	L-9	45.3	56.2	10.9	Bypass Diode	IEC3	Moderate	852	795	70.65618671	22.55847986
532	38	2	3	5	U-14	45.6	52.3	6.7	Bypass Diode	IEC3	Moderate	852	795	70.65622955	22.55856657
533	38	2	3	6	L-12	45.2	53.2	8	Bypass Diode	IEC3	Moderate	852	795	70.65619507	22.5586146
534	37	2	9	18	L-18	45.9	56.2	10.3	Bypass Diode	IEC3	Moderate	852	795	70.65592356	22.55861786
535	37	2	9	17	U-6	46.5	57.3	10.8	Bypass Diode	IEC3	Moderate	852	795	70.65578787	22.558639
536	9	1	9	18	L-12	46.7	55.3	8.6	Bypass Diode	IEC3	Moderate	852	632	70.65519024	22.55856093
537	9	1	9	17	U-6	46.8	55.3	8.5	Bypass Diode	IEC3	Moderate	852	632	70.65512351	22.55857946
538	9	1	9	17	U-3	46.2	55.2	9	Bypass Diode	IEC3	Moderate	852	632	70.65509005	22.55858116
539	9	1	3	3	L-30	46.8	55.1	8.3	Bypass Diode	IEC3	Moderate	852	632	70.65505431	22.5585626
540	9	1	8	15	U-13	46.9	55.4	8.5	Bypass Diode	IEC3	Moderate	852	632	70.65518864	22.55864612

FID	INV_No	ICR_No	M_No	String No	Module No	Minimum Temp	Maximum Temp	Delta Temp	Anomalies Type	IEC_Category	Severity	Count	Irradiation	Long	Lat
541	9	1	2	3	U-17	47.6	54.3	6.7	Bypass Diode	IEC3	Moderate	852	632	70.65489631	22.55865014
542	9	1	2	3	U-14	47.2	54.8	7.6	Bypass Diode	IEC3	Moderate	852	632	70.65486255	22.55865075
543	8	1	7	13	U-27	47.9	54.2	6.3	Bypass Diode	IEC3	Moderate	852	924	70.65468215	22.55858555
544	8	1	1	2	L-28	48.1	54.6	6.5	Bypass Diode	IEC3	Moderate	852	924	70.65435687	22.55857151
545	8	1	7	13	U-14	48.2	54.8	6.6	Bypass Diode	IEC3	Moderate	852	924	70.65453813	22.55858695
546	8	1	8	16	L-9	48.6	54.6	6	Bypass Diode	IEC3	Moderate	852	924	70.65449461	22.55850168
547	8	1	2	4	L-8	48.5	54.2	5.7	Bypass Diode	IEC3	Moderate	852	924	70.65414437	22.55850528
548	8	1	2	3	U-3	48.1	54.8	6.7	Bypass Diode	IEC3	Moderate	852	924	70.65408842	22.55852505
549	6	1	6	12	L-18	47.9	54.6	6.7	Bypass Diode	IEC3	Moderate	852	924	70.65422901	22.55864039
550	6	1	6	11	U-24	47.6	54.2	6.6	Bypass Diode	IEC3	Moderate	852	924	70.65429701	22.55865672
551	6	1	6	11	U-28	47.2	54.6	7.4	Bypass Diode	IEC3	Moderate	852	924	70.65434311	22.5586577
552	6	1	4	8	L-23	47.5	54.3	6.8	Bypass Diode	IEC3	Moderate	852	924	70.654259	22.55877376
553	6	1	12	20	L-2	45.9	56.2	10.3	Bypass Diode	IEC3	Moderate	852	924	70.65436201	22.55877258
554	6	1	5	10	L-27	45.2	54.3	9.1	Bypass Diode	IEC3	Moderate	852	924	70.6543172	22.55870538
555	6	1	3	5	U-16	45.3	52.6	7.3	Bypass Diode	IEC3	Moderate	852	924	70.65416596	22.55886084
556	6	1	1	1	U-6	45.6	58	12.4	Bypass Diode	IEC3	Moderate	852	924	70.65402886	22.55899847
557	4	1	6	11	U-8	47.1	54.8	7.7	Bypass Diode	IEC3	Moderate	852	924	70.65403823	22.55906472
558	4	1	6	11	U-19	46.3	54.2	7.9	Bypass Diode	IEC3	Moderate	852	924	70.65416168	22.55906345
559	4	1	5	10	L-17	46.9	54.6	7.7	Bypass Diode	IEC3	Moderate	852	924	70.65412489	22.5591124
560	4	1	5	9	U-14	46.5	54.3	7.8	Bypass Diode	IEC3	Moderate	852	924	70.65409096	22.55913237
561	4	1	9	18	L-9	46.8	55.6	8.8	Bypass Diode	IEC3	Moderate	852	924	70.6543467	22.55924478
562	4	1	9	18	L-7	46.9	56.8	9.9	Bypass Diode	IEC3	Moderate	852	924	70.6543226	22.55924568
563	4	1	9	17	U-20	46.7	56.1	9.4	Bypass Diode	IEC3	Moderate	852	924	70.65447044	22.55926287
564	6	1	7	14	L-21	46.5	54.3	7.8	Bypass Diode	IEC3	Moderate	852	924	70.65453579	22.55897403
565	6	1	7	14	L-25	46.8	54.2	7.4	Bypass Diode	IEC3	Moderate	852	924	70.65458091	22.55897378
566	7	1	2	4	L-8	46.8	54.55	7.75	Bypass Diode	IEC3	Moderate	852	632	70.65471455	22.55903819
567	7	1	2	4	L-9	46.9	52.3	5.4	Bypass Diode	IEC3	Moderate	852	632	70.65472645	22.5590384
568	7	1	1	2	L-7	46.9	54.3	7.4	Bypass Diode	IEC3	Moderate	852	924	70.65468922	22.55910574
569	7	1	1	2	U-17	46.9	56.8	9.9	Bypass Diode	IEC3	Moderate	852	632	70.6548028	22.55912349
570	7	1	1	2	L-20	46.8	56.1	9.3	Bypass Diode	IEC3	Moderate	852	632	70.65483574	22.5591049
571	7	1	2	3	U-26	46.2	56.7	10.5	Bypass Diode	IEC3	Moderate	852	632	70.65491754	22.55905436
572	6	1	12	20	L-30	46.3	56.3	10	Bypass Diode	IEC3	Moderate	852	924	70.65467675	22.55878774
573	7	1	12	23	U-14	46.2	56.8	10.6	Bypass Diode	IEC3	Moderate	852	632	70.65483569	22.55878577
574	7	1	5	10	L-17	46.8	56.1	9.3	Bypass Diode	IEC3	Moderate	852	632	70.65485546	22.55883417
575	7	1	5	10	L-27	46.9	54.2	7.3	Bypass Diode	IEC3	Moderate	852	632	70.65496809	22.55883285
576	9	1	1	1	U-18	46.7	54.8	8.1	Bypass Diode	IEC3	Moderate	852	632	70.65489412	22.55871755

FID	INV_No	ICR_No	M_No	String No	Module No	Minimum Temp	Maximum Temp	Delta Temp	Anomalies Type	IEC_Category	Severity	Count	Irradiation	Long	Lat
577	9	1	1	2	L-18	46.8	53.8	7	Bypass Diode	IEC3	Moderate	852	632	70.65489319	22.55869777
578	9	1	1	1	U-16	46.5	56.3	9.8	Bypass Diode	IEC3	Moderate	852	632	70.65487121	22.55871714
579	9	1	1	2	L-2	46.4	58.6	12.2	Bypass Diode	IEC3	Moderate	852	924	70.65471386	22.55870264
580	7	1	11	22	L-16	46.2	55.2	9	Bypass Diode	IEC3	Moderate	852	632	70.65519503	22.55876313
581	37	2	1	2	L-5	46.3	56.3	10	Bypass Diode	IEC3	Moderate	852	795	70.65539619	22.55882697
582	37	2	1	1	U-9	46.8	56.8	10	Bypass Diode	IEC3	Moderate	852	795	70.65544309	22.5588454
583	37	2	1	2	L-18	46.2	56.9	10.7	Bypass Diode	IEC3	Moderate	852	795	70.6555436	22.55882562
584	37	2	7	14	L-9	46.1	56.2	10.1	Bypass Diode	IEC3	Moderate	852	795	70.65579486	22.55875401
585	37	2	8	16	L-6	46.9	56.8	9.9	Bypass Diode	IEC3	Moderate	852	795	70.655774	22.55868691
586	38	2	9	17	U-10	45.1	56.2	11.1	Bypass Diode	IEC3	Moderate	852	824	70.65651148	22.55862939
587	38	2	8	16	L-22	45.8	56.9	11.1	Bypass Diode	IEC3	Moderate	852	824	70.65663051	22.5586761
588	38	2	2	3	U-11	45.6	56.2	10.6	Bypass Diode	IEC3	Moderate	852	795	70.65616852	22.5587012
589	31	2	12	23	U-17	45.8	56.4	10.6	Bypass Diode	IEC3	Moderate	852	795	70.65620956	22.55883502
590	38	2	12	23	L-26	46.9	56.1	9.2	Bypass Diode	IEC3	Moderate	852	795	70.65631103	22.55881568
591	41	2	11	21	U-11	46.7	56.8	10.1	Bypass Diode	IEC3	Moderate	852	795	70.65646912	22.55889983
592	41	2	5	9	U-11	46.2	56.2	10	Bypass Diode	IEC3	Moderate	852	795	70.65613088	22.55890425
593	41	2	12	23	U-2	46.8	56.8	10	Bypass Diode	IEC3	Moderate	852	795	70.65604111	22.55883759
594	37	2	6	12	L-23	46.9	56.4	9.5	Bypass Diode	IEC3	Moderate	852	795	70.65593883	22.55882045
595	37	2	6	12	L-18	46.8	56.3	9.5	Bypass Diode	IEC3	Moderate	852	795	70.65588225	22.5588212
596	37	2	6	12	L-12	46.5	56.2	9.7	Bypass Diode	IEC3	Moderate	852	795	70.65581412	22.55882156
597	37	2	7	13	U-15	46.2	56.9	10.7	Bypass Diode	IEC3	Moderate	852	795	70.65586299	22.55877308
598	47	2	7	14	L-18	45.9	54.6	8.7	Bypass Diode	IEC3	Moderate	852	795	70.65589609	22.55875315
599	4	1	8	16	L-6	46.2	56.8	10.6	Bypass Diode	IEC3	Moderate	852	924	70.65429943	22.55931302
600	4	1	8	16	L-30	46.3	56	9.7	Bypass Diode	IEC3	Moderate	852	924	70.65457043	22.55930996
601	5	1	2	3	U-13	45.2	54.6	9.4	Bypass Diode	IEC3	Moderate	852	632	70.65471851	22.55932628
602	4	1	7	13	U-26	45.6	54.8	9.2	Bypass Diode	IEC3	Moderate	852	924	70.65451189	22.55939672
603	4	1	1	2	L-23	45.2	54.2	9	Bypass Diode	IEC3	Moderate	852	924	70.65413928	22.55938232
604	4	1	11	24	L-8	48.4	55.3	6.9	Bypass Diode	IEC3	Moderate	852	924	70.65392409	22.55952007
605	3	1	3	6	L-21	47.6	55.2	7.6	Bypass Diode	IEC3	Moderate	852	924	70.65407648	22.55958559
606	3	1	3	5	U-28	47.5	55.6	8.1	Bypass Diode	IEC3	Moderate	852	924	70.65415559	22.55960343
607	3	1	2	4	L-29	47.6	55.8	8.2	Bypass Diode	IEC3	Moderate	852	924	70.65415394	22.55965193
608	3	1	2	4	L-24	48.3	55.2	6.9	Bypass Diode	IEC3	Moderate	852	924	70.65409693	22.55965358
609	3	1	2	2	L-1	47.5	55.8	8.3	Bypass Diode	IEC3	Moderate	852	924	70.6538382	22.55965612
610	3	1	1	2	L-5	47.2	55.9	8.7	Bypass Diode	IEC3	Moderate	852	924	70.65386911	22.55972149
611	3	1	1	1	U-6	48	55.8	7.8	Bypass Diode	IEC3	Moderate	852	924	70.65388188	22.55974245
612	1	1	6	12	L-7	45.6	55.6	10	Bypass Diode	IEC3	Moderate	852	924	70.65387897	22.55979142

FID	INV_No	ICR_No	M_No	String No	Module No	Minimum Temp	Maximum Temp	Delta Temp	Anomalies Type	IEC_Category	Severity	Count	Irradiation	Long	Lat
613	1	1	6	11	U-7	47.2	56.2	9	Bypass Diode	IEC3	Moderate	852	924	70.6538789	22.55980981
614	1	1	6	12	L-9	46.8	56.3	9.5	Bypass Diode	IEC3	Moderate	852	924	70.65390138	22.55979092
615	1	1	6	12	L-23	46.9	56.8	9.9	Bypass Diode	IEC3	Moderate	852	924	70.65405886	22.55978903
616	3	1	1	2	L-22	45.8	56.4	10.6	Bypass Diode	IEC3	Moderate	852	924	70.65406184	22.55972221
617	1	1	5	9	U-13	45.6	56.9	11.3	Bypass Diode	IEC3	Moderate	852	924	70.65393244	22.55987635
618	1	1	5	10	L-10	47.5	56.8	9.3	Bypass Diode	IEC3	Moderate	852	924	70.65389798	22.55985779
619	1	1	5	9	U-4	48.5	54.8	6.3	Bypass Diode	IEC3	Moderate	852	924	70.65383171	22.55987755
620	1	1	12	20	L-14	47.2	56.2	9	Bypass Diode	IEC3	Moderate	852	924	70.65427045	22.55992086
621	1	1	11	22	L-16	47.1	55.1	8	Bypass Diode	IEC3	Moderate	852	924	70.65430584	22.55985369
622	1	1	11	22	L-15	47.3	55.9	8.6	Bypass Diode	IEC3	Moderate	852	924	70.65429439	22.5598536
623	1	1	12	20	L-25	47.5	55.6	8.1	Bypass Diode	IEC3	Moderate	852	924	70.6543936	22.55992078
624	2	1	5	9	U-7	47.8	55.4	7.6	Bypass Diode	IEC3	Moderate	852	924	70.65454343	22.55986825
625	3	1	7	13	U-4	46.2	55.3	9.1	Bypass Diode	IEC3	Moderate	852	924	70.65453626	22.55973371
626	3	1	7	13	U-10	46.8	56.1	9.3	Bypass Diode	IEC3	Moderate	852	632	70.6546042	22.55973301
627	3	1	10	20	L-3	46.1	55.9	9.8	Bypass Diode	IEC3	Moderate	852	632	70.65484989	22.55977876
628	3	1	11	21	U-11	45.8	55.9	10.1	Bypass Diode	IEC3	Moderate	852	632	70.6549532	22.55972828
629	3	1	12	23	L-6	45.6	55.8	10.2	Bypass Diode	IEC3	Moderate	852	632	70.65490984	22.5596611
630	3	1	11	22	L-29	45.8	56.1	10.3	Bypass Diode	IEC3	Moderate	852	632	70.65515648	22.55970777
631	46	2	6	11	U-11	45.9	54.2	8.3	Bypass Diode	IEC3	Moderate	852	795	70.65527908	22.55979241
632	46	2	6	11	U-3	45.6	57.6	12	Bypass Diode	IEC3	Moderate	852	632	70.65518836	22.55979273
633	5	1	6	12	L-16	45.2	54.6	9.4	Bypass Diode	IEC3	Moderate	852	632	70.65504977	22.55950615
634	5	1	7	14	L-20	45.1	56.9	11.8	Bypass Diode	IEC3	Moderate	852	632	70.65510909	22.55943855
635	5	1	7	13	U-26	45.3	56.8	11.5	Bypass Diode	IEC3	Moderate	852	632	70.65517637	22.5594563
636	45	2	5	10	L-3	45.5	57.1	11.6	Bypass Diode	IEC3	Moderate	852	632	70.65526805	22.55936884
637	45	2	5	9	U-3	45.2	56.8	11.6	Bypass Diode	IEC3	Moderate	852	632	70.65526842	22.55938793
638	45	2	6	12	L-14	45.6	56.9	11.3	Bypass Diode	IEC3	Moderate	852	795	70.65540668	22.55929913
639	45	2	11	22	L-16	45.8	57.2	11.4	Bypass Diode	IEC3	Moderate	852	795	70.65576863	22.55929514
640	45	2	10	20	L-15	45.2	58.2	13	Bypass Diode	IEC3	Moderate	852	795	70.65574265	22.55936301
641	42	2	3	6	L-24	45.3	57.9	12.6	Bypass Diode	IEC3	Moderate	852	795	70.65555766	22.55909484
642	42	2	3	5	U-17	45.9	56.9	11	Bypass Diode	IEC3	Moderate	852	795	70.65547896	22.55911456
643	42	2	2	4	L-20	45.2	57.1	11.9	Bypass Diode	IEC3	Moderate	852	795	70.65549937	22.55916374
644	42	2	2	4	L-14	46.2	56.9	10.7	Bypass Diode	IEC3	Moderate	852	795	70.65543197	22.55916393
645	7	1	6	12	L-23	46.8	56.8	10	Bypass Diode	IEC3	Moderate	852	632	70.65520654	22.55909909
646	5	1	11	22	L-10	46.9	56.2	9.3	Bypass Diode	IEC3	Moderate	852	632	70.6550492	22.55916861
647	5	1	4	7	U-18	46.2	56.2	10	Bypass Diode	IEC3	Moderate	852	632	70.65480059	22.55919125
648	1	1	12	23	L-11	45.8	56.1	10.3	Bypass Diode	IEC3	Moderate	852	924	70.6542619	22.55978676

FID	INV_No	ICR_No	M_No	String No	Module No	Minimum Temp	Maximum Temp	Delta Temp	Anomalies Type	IEC_Category	Severity	Count	Irradiation	Long	Lat
649	1	1	7	13	U-10	45.9	56.9	11	Bypass Diode	IEC3	Moderate	852	924	70.6541849	22.56014165
650	2	1	1	2	L-10	46.2	56.2	10	Bypass Diode	IEC3	Moderate	852	632	70.65452297	22.56011994
651	2	1	1	2	L-13	46.8	56.3	9.5	Bypass Diode	IEC3	Moderate	852	632	70.65455663	22.56011959
652	2	1	1	1	U-14	46.2	56.8	10.6	Bypass Diode	IEC3	Moderate	852	632	70.65456854	22.5601384
653	2	1	7	13	U-5	48.5	56.1	7.6	Bypass Diode	IEC3	Moderate	852	632	70.65480624	22.56013561
654	2	1	3	5	U-29	48.2	56.9	8.7	Bypass Diode	IEC3	Moderate	852	632	70.65510475	22.55999706
655	2	1	11	22	L-13	45.2	56.7	11.5	Bypass Diode	IEC3	Moderate	852	632	70.65494888	22.55984432
656	45	2	1	2	L-17	45.6	56.8	11.2	Bypass Diode	IEC3	Moderate	852	795	70.65537261	22.55963713
657	45	2	1	1	U-17	45.2	56.2	11	Bypass Diode	IEC3	Moderate	852	795	70.65537297	22.55965609
658	45	2	3	6	L-15	45.1	56.4	11.3	Bypass Diode	IEC3	Moderate	852	795	70.65537672	22.55950213
659	5	1	10	20	L-22	45.3	56.5	11.2	Bypass Diode	IEC3	Moderate	852	632	70.65516934	22.5592351
660	5	1	10	19	U-22	45.2	56.4	11.2	Bypass Diode	IEC3	Moderate	852	632	70.65517	22.55925432
661	5	1	2	3	U-20	45.8	56.8	11	Bypass Diode	IEC3	Moderate	852	632	70.65479694	22.55932616
662	5	1	1	2	L-23	45.6	56.2	10.6	Bypass Diode	IEC3	Moderate	852	632	70.65481653	22.55937467
663	45	2	4	8	L-29	46.5	56.2	9.7	Bypass Diode	IEC3	Moderate	852	795	70.65554873	22.55945154
664	42	2	1	2	L-27	46.2	56.8	10.6	Bypass Diode	IEC3	Moderate	852	795	70.65556555	22.55922984
665	42	2	8	16	L-6	46.9	56.9	10	Bypass Diode	IEC3	Moderate	852	795	70.6556806	22.55916118
666	41	2	6	11	L-4	45.8	54.2	8.4	Bypass Diode	IEC3	Moderate	852	795	70.65632179	22.55921917
667	51	2	6	11	L-19	45.2	54.2	9	Bypass Diode	IEC3	Moderate	852	824	70.65649104	22.55921764
668	44	2	5	10	L-21	45.3	54.3	9	Bypass Diode	IEC3	Moderate	852	795	70.65616269	22.55929067
669	44	2	4	8	L-26	45.7	54.8	9.1	Bypass Diode	IEC3	Moderate	852	795	70.6562047	22.55935598
670	44	2	9	17	U-19	45.6	54.1	8.5	Bypass Diode	IEC3	Moderate	852	795	70.65645268	22.55943946
671	44	2	9	17	U-15	45.9	54.6	8.7	Bypass Diode	IEC3	Moderate	852	795	70.65640804	22.55944124
672	44	2	9	17	U-13	45.1	54.1	9	Bypass Diode	IEC3	Moderate	852	795	70.65638478	22.55944095
673	44	2	8	16	U-26	45.6	54.9	9.3	Bypass Diode	IEC3	Moderate	852	824	70.6565176	22.5594871
674	44	2	8	15	U-18	45.2	54.2	9	Bypass Diode	IEC3	Moderate	852	795	70.65642822	22.55950711
675	47	2	12	23	U-23	45.8	54.6	8.8	Bypass Diode	IEC3	Moderate	852	824	70.65645791	22.55964185
676	44	2	12	23	L-9	45.6	54.8	9.2	Bypass Diode	IEC3	Moderate	852	795	70.65629964	22.55962479
677	47	2	12	23	U-9	45.1	54.3	9.2	Bypass Diode	IEC3	Moderate	852	795	70.65630073	22.55964467
678	47	2	12	23	U-3	45.1	54.8	9.7	Bypass Diode	IEC3	Moderate	852	795	70.65623314	22.55964538
679	47	2	11	21	U-3	45.1	54.6	9.5	Bypass Diode	IEC3	Moderate	852	795	70.65621876	22.55971173
680	47	2	5	9	U-14	45.1	54.6	9.5	Bypass Diode	IEC3	Moderate	852	795	70.65600455	22.5597156
681	44	2	1	1	U-11	45.6	52.6	7	Bypass Diode	IEC3	Moderate	852	795	70.65599621	22.55958194
682	44	2	1	2	L-19	45.3	53.8	8.5	Bypass Diode	IEC3	Moderate	852	795	70.65608671	22.5595606
683	44	2	1	1	L-3	45.3	53.9	8.6	Bypass Diode	IEC3	Moderate	852	795	70.65590731	22.559582
684	44	2	1	2	L-1	45.3	56.2	10.9	Bypass Diode	IEC3	Moderate	852	795	70.65588456	22.55956382

FID	INV_No	ICR_No	M_No	String No	Module No	Minimum Temp	Maximum Temp	Delta Temp	Anomalies Type	IEC_Category	Severity	Count	Irradiation	Long	Lat
685	44	2	2	4	L-9	45.8	53.2	7.4	Bypass Diode	IEC3	Moderate	852	795	70.65598792	22.55949466
686	44	2	2	3	U-12	45.9	53.6	7.7	Bypass Diode	IEC3	Moderate	852	795	70.65602186	22.55951331
687	45	2	7	14	L-10	45.5	56.7	11.2	Bypass Diode	IEC3	Moderate	852	795	70.65562034	22.55970145
688	45	2	12	23	L-24	45.6	56.3	10.7	Bypass Diode	IEC3	Moderate	852	795	70.65543761	22.55970367
689	47	2	3	5	L-9	45.2	53.1	7.9	Bypass Diode	IEC3	Moderate	852	795	70.65592126	22.55985052
690	47	2	2	4	L-12	45.8	52.9	7.1	Bypass Diode	IEC3	Moderate	852	795	70.65594173	22.55989826
691	47	2	2	3	U-22	45.2	53.6	8.4	Bypass Diode	IEC3	Moderate	852	795	70.65605417	22.55991716
692	47	2	3	5	U-24	45.2	53.8	8.6	Bypass Diode	IEC3	Moderate	852	795	70.65609071	22.55984981
693	47	2	9	18	L-15	46.3	52.9	6.6	Bypass Diode	IEC3	Moderate	852	795	70.65632764	22.55982748
694	47	2	9	18	L-21	46.5	53.6	7.1	Bypass Diode	IEC3	Moderate	852	795	70.65639521	22.55982679
695	48	2	2	4	L-9	46.8	56.1	9.3	Bypass Diode	IEC3	Moderate	852	824	70.65659866	22.55982376
696	47	2	1	2	L-28	46.2	53.2	7	Bypass Diode	IEC3	Moderate	852	795	70.65610906	22.55996579
697	47	2	1	2	L-27	46.2	53.1	6.9	Bypass Diode	IEC3	Moderate	852	795	70.65609787	22.55996669
698	47	1	1	2	L-8	45.9	56.8	10.9	Bypass Diode	IEC3	Moderate	852	795	70.65588453	22.55996914
699	41	2	2	4	U-17	46.3	53.2	6.9	Bypass Diode	IEC3	Moderate	852	795	70.65615656	22.55910675
700	48	2	1	1	U-11	46.1	52.9	6.8	Bypass Diode	IEC3	Moderate	852	824	70.65660808	22.5599109
701	48	2	6	11	U-30	46.8	53.6	6.8	Bypass Diode	IEC3	Moderate	852	824	70.65716197	22.55990249
702	49	3	1	1	U-27	46.3	53.8	7.5	Bypass Diode	IEC3	Moderate	852	824	70.65748067	22.55983033
703	48	2	2	4	L-27	46.9	56.1	9.2	Bypass Diode	IEC3	Moderate	852	824	70.65680299	22.55982063
704	48	3	2	4	L-25	46.8	55.6	8.8	Bypass Diode	IEC3	Moderate	852	824	70.65677918	22.5598218
705	47	2	11	22	L-29	47.3	55.2	7.9	Bypass Diode	IEC3	Moderate	852	824	70.65651245	22.55968993
706	43	2	12	23	L-1	47.1	55.3	8.2	Bypass Diode	IEC3	Moderate	852	824	70.65656208	22.559554
707	48	2	8	15	U-16	45.6	53.4	7.8	Bypass Diode	IEC3	Moderate	852	824	70.65703118	22.55976898
708	49	3	2	3	U-18	45.2	53.8	8.6	Bypass Diode	IEC3	Moderate	852	824	70.65739283	22.5597644
709	49	3	2	3	U-24	45.3	53.6	8.3	Bypass Diode	IEC3	Moderate	852	824	70.65746004	22.55976318
710	49	3	2	3	U-27	45.8	53.9	8.1	Bypass Diode	IEC3	Moderate	852	824	70.6574935	22.5597627
711	49	3	11	22	U-1	45.6	53.4	7.8	Bypass Diode	IEC3	Moderate	852	824	70.65753986	22.55976157
712	49	3	12	23	L-10	45.8	53.2	7.4	Bypass Diode	IEC3	Moderate	852	824	70.65799388	22.55966939
713	49	3	12	23	U-5	45.9	53.4	7.5	Bypass Diode	IEC3	Moderate	852	824	70.65793734	22.55968889
714	49	3	12	23	U-1	45.2	53.6	8.4	Bypass Diode	IEC3	Moderate	852	824	70.65789176	22.55969037
715	49	3	6	11	U-29	45.2	53.1	7.9	Bypass Diode	IEC3	Moderate	852	824	70.65786923	22.55969027
716	49	3	6	11	U-28	45.3	53.8	8.5	Bypass Diode	IEC3	Moderate	852	824	70.65785787	22.55969038
717	49	3	6	11	U-26	45.3	53.4	8.1	Bypass Diode	IEC3	Moderate	852	824	70.65783446	22.55969146
718	49	3	6	11	U-22	45.1	54.6	9.5	Bypass Diode	IEC3	Moderate	852	824	70.65779012	22.55969175
719	49	3	6	12	L-17	45.3	53.1	7.8	Bypass Diode	IEC3	Moderate	852	824	70.65773332	22.55967376
720	49	3	6	12	L-13	45.2	52.8	7.6	Bypass Diode	IEC3	Moderate	852	824	70.65768827	22.55967489

FID	INV_No	ICR_No	M_No	String No	Module No	Minimum Temp	Maximum Temp	Delta Temp	Anomalies Type	IEC_Category	Severity	Count	Irradiation	Long	Lat
721	49	3	6	11	U-4	45.6	52.4	6.8	Bypass Diode	IEC3	Moderate	852	824	70.6575874	22.55969485
722	49	3	6	12	L-3	45.8	52.7	6.9	Bypass Diode	IEC3	Moderate	852	824	70.65757491	22.55967522
723	49	3	4	7	U-9	45.7	54.6	8.9	Bypass Diode	IEC3	Moderate	852	824	70.65731736	22.55963023
724	49	3	7	13	U-15	45.6	54.1	8.5	Bypass Diode	IEC3	Moderate	852	824	70.6577237	22.55962432
725	49	3	7	14	L-27	45.9	54.3	8.4	Bypass Diode	IEC3	Moderate	852	824	70.65785856	22.55960377
726	49	3	9	18	L-12	48.6	54.1	5.5	Bypass Diode	IEC3	Moderate	852	824	70.65802931	22.55960127
727	49	3	9	17	U-28	47.5	55.6	8.1	Bypass Diode	IEC3	Moderate	852	796.72	70.65820927	22.55961645
728	51	3	6	12	L-27	48.2	57.3	9.1	Bypass Diode	IEC3	Moderate	852	796.72	70.65854968	22.55952599
729	50	3	6	11	U-17	45.2	54.3	9.1	Bypass Diode	IEC3	Moderate	852	824	70.65777296	22.55948915
730	49	3	5	10	U-22	45.6	54.9	9.3	Bypass Diode	IEC3	Moderate	852	824	70.65747764	22.55956076
731	49	3	5	10	L-19	46.5	54.7	8.2	Bypass Diode	IEC3	Moderate	852	824	70.65744269	22.55954268
732	43	2	1	1	U-26	46.1	54.3	8.2	Bypass Diode	IEC3	Moderate	852	824	70.65685665	22.55950189
733	43	2	1	2	L-25	46.8	54.1	7.3	Bypass Diode	IEC3	Moderate	852	824	70.65684734	22.55948249
734	43	2	3	60	L-18	46.4	54.7	8.3	Bypass Diode	IEC3	Moderate	852	824	70.65679387	22.55934862
735	43	2	4	7	U-10	46.1	54.2	8.1	Bypass Diode	IEC3	Moderate	852	824	70.65671657	22.55930014
736	50	3	2	3	U-3	46.5	54.3	7.8	Bypass Diode	IEC3	Moderate	852	824	70.65731631	22.55929316
737	50	3	2	3	U-4	46.1	54.6	8.5	Bypass Diode	IEC3	Moderate	852	824	70.65732823	22.55929344
738	50	3	2	4	L-14	43.7	54.3	10.6	Bypass Diode	IEC3	Moderate	852	824	70.65744021	22.55927267
739	50	3	2	3	U-28	45.8	54.6	8.8	Bypass Diode	IEC3	Moderate	852	824	70.65759744	22.5592895
740	50	3	1	2	L-24	48.3	54.8	6.5	Bypass Diode	IEC3	Moderate	852	824	70.65753805	22.55933926
741	50	3	1	2	L-26	45.9	53.9	8	Bypass Diode	IEC3	Moderate	852	824	70.65756116	22.55933915
742	50	3	7	14	L-6	47.3	55.4	8.1	Bypass Diode	IEC3	Moderate	852	824	70.65766145	22.55940384
743	51	3	2	4	L-1	45.2	55.8	10.6	Bypass Diode	IEC3	Moderate	852	824	70.65794469	22.55939965
744	51	3	2	3	U-21	45.2	54.6	9.4	Bypass Diode	IEC3	Moderate	852	796.72	70.65817115	22.55941564
745	51	3	2	3	U-27	45.2	52	6.8	Bypass Diode	IEC3	Moderate	852	796.72	70.658237	22.55941376
746	51	3	8	15	U-13	45.3	54.6	9.3	Bypass Diode	IEC3	Moderate	852	796.72	70.65841898	22.5594122
747	51	3	8	15	U-18	46.2	55.3	9.1	Bypass Diode	IEC3	Moderate	852	796.72	70.65847583	22.55941135
748	51	3	7	14	L-26	45.5	53.9	8.4	Bypass Diode	IEC3	Moderate	852	796.72	70.65855251	22.55945933
749	51	3	11	21	U-8	45.6	52.6	7	Bypass Diode	IEC3	Moderate	852	796.72	70.65870157	22.55940831
750	51	3	10	19	U-12	48.5	58.2	9.7	Bypass Diode	IEC3	Moderate	852	796.72	70.65843409	22.55927729
751	51	3	10	19	U-1	45.6	54.2	8.6	Bypass Diode	IEC3	Moderate	852	796.72	70.6583109	22.55927899
752	51	3	4	7	U-30	45.8	55.6	9.8	Bypass Diode	IEC3	Moderate	852	796.72	70.65829866	22.55927961
753	51	3	4	8	L-9	48.9	54.5	5.6	Bypass Diode	IEC3	Moderate	852	824	70.65806097	22.55926312
754	51	3	4	8	L-7	47.6	55.6	8	Bypass Diode	IEC3	Moderate	852	824	70.65803735	22.55926304
755	50	3	9	18	L-3	45.2	54.6	9.4	Bypass Diode	IEC3	Moderate	852	824	70.65765469	22.5592696
756	41	2	9	19	U-23	45.6	54.3	8.7	Bypass Diode	IEC3	Moderate	852	824	70.65659137	22.55896494

FID	INV_No	ICR_No	M_No	String No	Module No	Minimum Temp	Maximum Temp	Delta Temp	Anomalies Type	IEC_Category	Severity	Count	Irradiation	Long	Lat
757	40	2	3	6	U-28	45.8	54.9	9.1	Bypass Diode	IEC3	Moderate	852	824	70.65698661	22.55894152
758	50	3	4	7	U-10	45.9	54.2	8.3	Bypass Diode	IEC3	Moderate	852	824	70.65742153	22.55915658
759	53	3	2	3	U-21	45.2	54.6	9.4	Bypass Diode	IEC3	Moderate	852	824	70.65758526	22.55895145
760	53	3	1	1	U-28	45.6	54.8	9.2	Bypass Diode	IEC3	Moderate	852	824	70.65765051	22.55901888
761	53	3	7	13	L-1	45.3	54.2	8.9	Bypass Diode	IEC3	Moderate	852	824	70.6576851	22.55901839
762	53	3	7	13	L-16	45.2	54.6	9.4	Bypass Diode	IEC3	Moderate	852	824	70.65785353	22.55901466
763	53	3	12	23	L-18	45.6	54.8	9.2	Bypass Diode	IEC3	Moderate	852	824	70.65786321	22.55906406
764	50	3	11	22	L-20	45.1	54.2	9.1	Bypass Diode	IEC3	Moderate	852	824	70.65787182	22.55913083
765	50	3	11	22	L-25	45.3	54.9	9.6	Bypass Diode	IEC3	Moderate	852	824	70.65792888	22.55913078
766	50	3	10	20	L-30	45.8	54.8	9	Bypass Diode	IEC3	Moderate	852	824	70.65797037	22.55919708
767	51	3	5	9	U-1	45.9	56.1	10.2	Bypass Diode	IEC3	Moderate	852	824	70.65798307	22.55921605
768	51	3	5	10	L-10	45.8	57.4	11.6	Bypass Diode	IEC3	Moderate	852	824	70.6580841	22.55919556
769	51	3	5	9	U-13	45.7	58.9	13.2	Bypass Diode	IEC3	Moderate	852	796.72	70.6581188	22.55921375
770	52	3	1	1	U-13	48.6	58.6	10	Bypass Diode	IEC3	Moderate	852	796.72	70.65813339	22.55914645
771	52	3	1	2	L-26	48.5	58.3	9.8	Bypass Diode	IEC3	Moderate	852	796.72	70.65827892	22.55912525
772	52	3	2	3	U-16	49.8	57.3	7.5	Bypass Diode	IEC3	Moderate	852	796.72	70.65817921	22.55907889
773	52	3	2	4	L-17	47	54.6	7.6	Bypass Diode	IEC3	Moderate	852	796.72	70.65819005	22.55906034
774	52	3	2	4	L-20	45.9	58.2	12.3	Bypass Diode	IEC3	Moderate	852	796.72	70.65822365	22.5590592
775	52	3	2	4	L-24	48.2	53.9	5.7	Bypass Diode	IEC3	Moderate	852	796.72	70.65826916	22.559059
776	52	3	7	14	L-1	45.8	57.6	11.8	Bypass Diode	IEC3	Moderate	852	796.72	70.65835011	22.55905658
777	52	3	7	14	L-4	49.5	55.9	6.4	Bypass Diode	IEC3	Moderate	852	796.72	70.65838316	22.55905716
778	52	3	7	14	L-5	47.7	55.4	7.7	Bypass Diode	IEC3	Moderate	852	796.72	70.65839422	22.55905705
779	52	3	8	16	U-8	47.2	55.8	8.6	Bypass Diode	IEC3	Moderate	852	796.72	70.65844081	22.55900724
780	52	3	6	12	L-18	45.6	54.7	9.1	Bypass Diode	IEC3	Moderate	852	796.72	70.65852717	22.5591211
781	52	3	6	12	L-20	45.8	53.8	8	Bypass Diode	IEC3	Moderate	852	796.72	70.65855057	22.55912164
782	52	3	10	20	U-1	46.8	52.9	6.1	Bypass Diode	IEC3	Moderate	852	796.72	70.65867501	22.5591392
783	52	3	10	20	L-10	46.2	56.4	10.2	Bypass Diode	IEC3	Moderate	852	796.72	70.65877615	22.55911853
784	52	3	10	20	L-15	45.8	53.8	8	Bypass Diode	IEC3	Moderate	852	796.72	70.65883307	22.5591183
785	52	3	7	14	L-28	47.3	52.9	5.6	Bypass Diode	IEC3	Moderate	852	796.72	70.6586533	22.55905307
786	52	3	4	8	L-11	45.2	54.2	9	Bypass Diode	IEC3	Moderate	852	796.72	70.65814897	22.55892437
787	52	3	9	18	L-5	45.8	56.7	10.9	Bypass Diode	IEC3	Moderate	852	796.72	70.65842078	22.55892104
788	52	3	9	18	L-8	47.2	54	6.8	Bypass Diode	IEC3	Moderate	852	796.72	70.65845466	22.55892035
789	52	3	9	17	U-9	48.5	52	3.5	Bypass Diode	IEC3	Moderate	852	796.72	70.65846606	22.55893982
790	52	3	9	17	U-10	45.3	51.1	5.8	Bypass Diode	IEC3	Moderate	852	796.72	70.65847723	22.55893937
791	54	3	10	19	U-1	45.7	52.3	6.6	Bypass Diode	IEC3	Moderate	852	796.72	70.6587281	22.55886869
792	54	3	10	20	L-5	48.3	55.6	7.3	Bypass Diode	IEC3	Moderate	852	796.72	70.65879706	22.55878124

FID	INV_No	ICR_No	M_No	String No	Module No	Minimum Temp	Maximum Temp	Delta Temp	Anomalies Type	IEC_Category	Severity	Count	Irradiation	Long	Lat
793	54	3	7	14	L-24	46.2	52.7	6.5	Bypass Diode	IEC3	Moderate	852	796.72	70.65866078	22.55878295
794	54	3	7	14	L-18	47.6	53.8	6.2	Bypass Diode	IEC3	Moderate	852	796.72	70.65859407	22.55878342
795	54	3	6	12	L-11	48.2	54.2	6	Bypass Diode	IEC3	Moderate	852	796.72	70.65850131	22.55885277
796	54	3	6	12	L-9	48.6	58.2	9.6	Bypass Diode	IEC3	Moderate	852	796.72	70.65847878	22.55885392
797	54	3	7	13	U-7	47.2	52.9	5.7	Bypass Diode	IEC3	Moderate	852	796.72	70.6584694	22.55880489
798	54	3	1	2	L-27	48.2	54.3	6.1	Bypass Diode	IEC3	Moderate	852	796.72	70.65834366	22.55885529
799	54	3	1	1	U-25	48.6	58.6	10	Bypass Diode	IEC3	Moderate	852	796.72	70.65832106	22.55887449
800	54	3	2	4	L-8	47.5	53.2	5.7	Bypass Diode	IEC3	Moderate	852	824	70.65814242	22.55878968
801	54	3	1	2	L-3	48.6	54.6	6	Bypass Diode	IEC3	Moderate	852	824	70.65807219	22.55885932
802	40	2	5	9	U-28	47.5	52.3	4.8	Bypass Diode	IEC3	Moderate	852	824	70.65701211	22.55882521
803	40	2	4	7	U-14	45.2	54.3	9.1	Bypass Diode	IEC3	Moderate	852	824	70.6568422	22.55889541
804	40	2	4	7	U-3	45.6	54.2	8.6	Bypass Diode	IEC3	Moderate	852	824	70.65671807	22.55889665
805	39	2	12	23	L-5	45.8	52.38	6.58	Bypass Diode	IEC3	Moderate	852	824	70.65676582	22.55874145
806	39	2	1	2	L-11	45.9	52.6	6.7	Bypass Diode	IEC3	Moderate	852	824	70.65684718	22.55867304
807	39	2	2	4	L-5	45.8	52.3	6.5	Bypass Diode	IEC3	Moderate	852	824	70.65679253	22.55860655
808	39	2	2	4	L-9	45.6	52.6	7	Bypass Diode	IEC3	Moderate	852	824	70.65683648	22.55860637
809	39	2	2	4	L-16	45.9	52.4	6.5	Bypass Diode	IEC3	Moderate	852	824	70.65691653	22.55860554
810	39	2	2	4	L-21	45.7	52.1	6.4	Bypass Diode	IEC3	Moderate	852	824	70.65697271	22.55860523
811	55	3	1	1	U-30	45.2	53.7	8.5	Bypass Diode	IEC3	Moderate	852	824	70.65741326	22.55861793
812	55	3	1	2	L-6	45.6	52.6	7	Bypass Diode	IEC3	Moderate	852	824	70.65748099	22.55859779
813	53	3	6	11	U-18	45.8	50.9	5.1	Bypass Diode	IEC3	Moderate	852	824	70.65760439	22.55868203
814	55	3	5	9	U-7	45.9	53.6	7.7	Bypass Diode	IEC3	Moderate	852	824	70.65784565	22.55854327
815	55	3	4	7	U-6	45.6	54.1	8.5	Bypass Diode	IEC3	Moderate	852	824	70.65782055	22.55861223
816	55	3	3	5	U-17	45.2	54.6	9.4	Bypass Diode	IEC3	Moderate	852	824	70.65793209	22.55867742
817	55	3	3	6	L-17	45.6	54.2	8.6	Bypass Diode	IEC3	Moderate	852	824	70.65793187	22.55865901
818	55	3	3	5	U-18	45.7	53.6	7.9	Bypass Diode	IEC3	Moderate	852	824	70.65796453	22.55867709
819	55	3	4	7	U-22	47.5	53.2	5.7	Bypass Diode	IEC3	Moderate	852	824	70.65800171	22.55860956
820	55	3	4	8	L-28	48.5	55.3	6.8	Bypass Diode	IEC3	Moderate	852	824	70.65806756	22.55858994
821	55	3	5	9	U-29	45.9	58.7	12.8	Bypass Diode	IEC3	Moderate	852	824	70.65809276	22.55854066
822	55	3	6	11	U-14	45.8	52.9	7.1	Bypass Diode	IEC3	Moderate	852	824	70.65793649	22.5584757
823	55	3	6	11	U-13	45.9	53.9	8	Bypass Diode	IEC3	Moderate	852	824	70.65792604	22.55847598
824	55	3	6	12	L-13	48.7	52.1	3.4	Bypass Diode	IEC3	Moderate	852	824	70.65792562	22.55845657
825	55	3	5	9	U-14	44.3	56.7	12.4	Bypass Diode	IEC3	Moderate	852	824	70.65792409	22.55854339
826	54	3	4	7	U-9	48.1	56.8	8.7	Bypass Diode	IEC3	Moderate	852	796.72	70.65818056	22.55867461
827	56	3	4	7	U-7	45.7	52.8	7.1	Bypass Diode	IEC3	Moderate	852	796.72	70.6585106	22.55860171
828	56	3	5	10	L-2	45.6	54.8	9.2	Bypass Diode	IEC3	Moderate	852	796.72	70.65846635	22.55851569

FID	INV_No	ICR_No	M_No	String No	Module No	Minimum Temp	Maximum Temp	Delta Temp	Anomalies Type	IEC_Category	Severity	Count	Irradiation	Long	Lat
829	56	3	5	10	L-23	47.2	58.3	11.1	Bypass Diode	IEC3	Moderate	852	796.72	70.65870236	22.5585136
830	56	3	5	9	U-24	45.2	55.3	10.1	Bypass Diode	IEC3	Moderate	852	796.72	70.65871503	22.55853305
831	56	3	10	19	U-11	48.2	54.2	6	Bypass Diode	IEC3	Moderate	852	796.72	70.65890586	22.55852942
832	54	3	12	22	U-13	45.6	58.2	12.6	Bypass Diode	IEC3	Moderate	852	796.72	70.65890276	22.55866359
833	54	3	11	21	L-3	45.2	56.3	11.1	Bypass Diode	IEC3	Moderate	852	796.72	70.65877719	22.55871574
834	39	2	6	12	L-29	46.2	52.3	6.1	Bypass Diode	IEC3	Moderate	852	824	70.65737508	22.55873412
835	35	2	2	4	L-26	46.1	53.9	7.8	Bypass Diode	IEC3	Moderate	852	824	70.65672915	22.55840495
836	49	2	4	7	U-15	46.3	52.8	6.5	Bypass Diode	IEC3	Moderate	852	824	70.65693094	22.55848882
837	35	2	12	23	L-4	46.1	52.4	6.3	Bypass Diode	IEC3	Moderate	852	824	70.65714508	22.55846762
838	56	3	1	1	L-6	45.2	52.6	7.4	Bypass Diode	IEC3	Moderate	852	824	70.65819853	22.55840446
839	56	3	1	1	U-7	48.3	53.1	4.8	Bypass Diode	IEC3	Moderate	852	824	70.65821025	22.55840468
840	56	3	1	1	U-15	45.6	52.6	7	Bypass Diode	IEC3	Moderate	852	796.72	70.65830089	22.55840307
841	56	3	1	2	L-20	45.2	55.3	10.1	Bypass Diode	IEC3	Moderate	852	796.72	70.65835688	22.55838325
842	56	3	3	5	U-30	44.9	58.6	13.7	Bypass Diode	IEC3	Moderate	852	796.72	70.65849495	22.55826518
843	56	3	3	6	L-20	47.6	57.3	9.7	Bypass Diode	IEC3	Moderate	852	796.72	70.65838229	22.55824784
844	56	3	3	6	L-14	48.3	56.3	8	Bypass Diode	IEC3	Moderate	852	796.72	70.65831398	22.55824804
845	56	3	3	5	U-7	45.3	52.3	7	Bypass Diode	IEC3	Moderate	852	824	70.65823664	22.55826946
846	55	3	9	17	U-12	48.5	58.3	9.8	Bypass Diode	IEC3	Moderate	852	824	70.65795447	22.55827369
847	35	2	9	18	L-5	46.9	52.9	6	Bypass Diode	IEC3	Moderate	852	824	70.65719727	22.55826432
848	35	2	10	19	U-29	46.8	58.6	11.8	Bypass Diode	IEC3	Moderate	852	824	70.65745434	22.55834699
849	55	3	8	16	L-17	41.2	54.3	13.1	Bypass Diode	IEC3	Moderate	852	824	70.65799648	22.55831986
850	55	3	8	15	U-17	45.5	52.3	6.8	Bypass Diode	IEC3	Moderate	852	824	70.65799627	22.55833976
851	55	3	8	15	U-21	45.2	55.3	10.1	Bypass Diode	IEC3	Moderate	852	824	70.658041	22.55833909
852	36	2	1	1	U-1	45.4	54.6	9.2	Bypass Diode	IEC3	Moderate	852	795	70.65610948	22.55843184
853	76	3	6	11	U-1	44.9	47.1	2.2	Single Cell Hotspot	IEC2	Minor	73	707.73	70.66025314	22.55466291
854	75	3	12	23	U-3	48	48.6	0.6	Single Cell Hotspot	IEC2	Minor	73	707.73	70.66045009	22.55499779
855	75	3	3	5	U-16	48.7	49.5	0.8	Single Cell Hotspot	IEC2	Minor	73	707.73	70.66077045	22.55519553
856	68	3	11	23	L-16	47.2	48.6	1.4	Single Cell Hotspot	IEC2	Minor	73	707.73	70.66027222	22.55613016
857	68	3	11	23	L-8	46.1	47.8	1.7	Single Cell Hotspot	IEC2	Minor	73	707.73	70.66018148	22.55612962
858	76	3	12	25	L-12	47.2	49	1.8	Single Cell Hotspot	IEC2	Minor	73	707.73	70.660872	22.55620288
859	70	3	10	20	L-7	48.5	49.3	0.8	Single Cell Hotspot	IEC2	Minor	73	707.73	70.66097621	22.55625274
860	72	3	4	8	L-23	48.1	49.6	1.5	Single Cell Hotspot	IEC2	Minor	73	707.73	70.66007325	22.55633529
861	67	1	3	5	U-2	46.8	47.5	0.7	Single Cell Hotspot	IEC2	Minor	73	707.73	70.66049676	22.55735851
862	68	3	7	13	U-16	47.7	50.2	2.5	Single Cell Hotspot	IEC2	Minor	73	707.73	70.66013289	22.55716249
863	11	1	7	13	U-20	46.3	47.5	1.2	Single Cell Hotspot	IEC2	Minor	73	924	70.65475228	22.55784415
864	11	1	7	13	U-26	46.2	47.2	1	Single Cell Hotspot	IEC2	Minor	73	924	70.65481948	22.55784229

FID	INV_No	ICR_No	M_No	String No	Module No	Minimum Temp	Maximum Temp	Delta Temp	Anomalies Type	IEC_Category	Severity	Count	Irradiation	Long	Lat
865	11	1	7	14	L-29	45.6	46.3	0.7	Single Cell Hotspot	IEC2	Minor	73	924	70.6548535	22.55782319
866	10	1	5	11	L-22	46.8	47.4	0.6	Single Cell Hotspot	IEC2	Minor	73	924	70.65476093	22.55789152
867	34	2	6	12	L-30	45.6	47.1	1.5	Single Cell Hotspot	IEC2	Minor	73	824	70.65753339	22.55799035
868	58	3	3	5	U-3	44.3	45	0.7	Single Cell Hotspot	IEC2	Minor	73	824	70.65763269	22.55767052
869	29	2	7	13	U-5	44.5	45.3	0.8	Single Cell Hotspot	IEC2	Minor	73	824	70.65700369	22.55754383
870	32	2	7	14	L-1	46.8	47.5	0.7	Single Cell Hotspot	IEC2	Minor	73	795	70.65619092	22.55800895
871	10	1	12	23	L-1	47.4	48.1	0.7	Single Cell Hotspot	IEC2	Minor	73	795	70.65585264	22.55801345
872	12	1	9	17	U-22	45.6	46.8	1.2	Single Cell Hotspot	IEC2	Minor	73	795	70.65547621	22.55769933
873	12	1	6	12	L-11	47.6	48.1	0.5	Single Cell Hotspot	IEC2	Minor	73	632	70.65531395	22.55788485
874	30	2	8	16	L-29	45.6	46.1	0.5	Single Cell Hotspot	IEC2	Minor	73	824	70.65694842	22.55745812
875	29	2	1	2	L-1	48	48.9	0.9	Single Cell Hotspot	IEC2	Minor	73	824	70.65662083	22.55753204
876	31	2	12	23	L-1	44.3	45.2	0.9	Single Cell Hotspot	IEC2	Minor	73	795	70.65594292	22.55754008
877	14	1	6	12	L-1	45.8	46.1	0.3	Single Cell Hotspot	IEC2	Minor	73	632	70.65506941	22.55741611
878	11	1	11	22	L-16	45.3	46	0.7	Single Cell Hotspot	IEC2	Minor	73	924	70.65475794	22.5575542
879	11	1	11	21	U-11	43.3	45	1.7	Single Cell Hotspot	IEC2	Minor	73	924	70.65470182	22.55757329
880	11	1	11	22	L-1	44.6	45.7	1.1	Single Cell Hotspot	IEC2	Minor	73	924	70.65458986	22.55755848
881	11	1	5	10	L-30	45.6	46.1	0.5	Single Cell Hotspot	IEC2	Minor	73	924	70.65457658	22.55755905
882	13	3	3	5	U-16	44.6	45.1	0.5	Single Cell Hotspot	IEC2	Minor	73	924	70.6539999	22.55737942
883	13	1	8	16	L-15	45.2	46.3	1.1	Single Cell Hotspot	IEC2	Minor	73	924	70.65401327	22.5572937
884	13	1	8	16	L-27	46.8	47.6	0.8	Single Cell Hotspot	IEC2	Minor	73	924	70.65414886	22.5572919
885	13	1	10	18	U-28	45.3	46.5	1.2	Single Cell Hotspot	IEC2	Minor	73	924	70.65418519	22.55724113
886	18	1	3	6	L-1	44.5	45.2	0.7	Single Cell Hotspot	IEC2	Minor	73	632	70.65525993	22.55714426
887	60	3	9	18	L-14	48.4	49.3	0.9	Single Cell Hotspot	IEC2	Minor	73	824	70.65837431	22.55730381
888	60	3	9	17	U-9	45.2	45.9	0.7	Single Cell Hotspot	IEC2	Minor	73	824	70.65831947	22.55732354
889	64	3	1	1	U-14	46.7	49.2	2.5	Single Cell Hotspot	IEC2	Minor	73	796.72	70.65871341	22.55731853
890	21	1	12	25	L-17	45.2	46.5	1.3	Single Cell Hotspot	IEC2	Minor	73	632	70.65555145	22.55619582
891	24	1	4	7	U-12	45.2	45.9	0.7	Single Cell Hotspot	IEC2	Minor	73	632	70.65535045	22.5563525
892	23	1	4	7	U-10	46.1	47.3	1.2	Single Cell Hotspot	IEC2	Minor	73	924	70.65433814	22.55629606
893	61	3	10	19	U-21	47.5	49.6	2.1	Single Cell Hotspot	IEC2	Minor	73	824	70.65790407	22.55699216
894	11	1	10	19	U-10	44.2	45.3	1.1	Single Cell Hotspot	IEC2	Minor	73	924	70.6546779	22.55764259
895	8	1	12	23	U-25	45	46.3	1.3	Single Cell Hotspot	IEC2	Minor	73	632	70.65505227	22.55830973
896	35	2	10	20	L-26	46.5	44.3	-2.2	Single Cell Hotspot	IEC2	Minor	73	824	70.65741864	22.55832934
897	56	3	5	10	U-7	45.6	47.4	1.8	Single Cell Hotspot	IEC2	Minor	73	796.72	70.65852197	22.55853341
898	55	1	1	1	U-4	49.2	50	0.8	Single Cell Hotspot	IEC2	Minor	73	824	70.65712095	22.55862097
899	52	3	8	17	L-26	45	46.2	1.2	Single Cell Hotspot	IEC2	Minor	73	796.72	70.65864506	22.55898527
900	52	3	8	16	U-15	46.2	47.3	1.1	Single Cell Hotspot	IEC2	Minor	73	796.72	70.65852098	22.5590065

FID	INV_No	ICR_No	M_No	String No	Module No	Minimum Temp	Maximum Temp	Delta Temp	Anomalies Type	IEC_Category	Severity	Count	Irradiation	Long	Lat
901	52	3	7	13	U-13	45.3	46.5	1.2	Single Cell Hotspot	IEC2	Minor	73	796.72	70.65848409	22.5590723
902	25	3	10	20	L-13	46.1	46.5	0.4	Single Cell Hotspot	IEC2	Minor	73	796.72	70.65881063	22.55911683
903	52	3	10	20	U-13	44.7	48.6	3.9	Single Cell Hotspot	IEC2	Minor	73	796.72	70.65881057	22.55913593
904	52	3	10	20	L-11	45.8	47.1	1.3	Single Cell Hotspot	IEC2	Minor	73	796.72	70.65878738	22.55911786
905	52	3	10	20	L-9	45	46.5	1.5	Single Cell Hotspot	IEC2	Minor	73	796.72	70.65876556	22.55911888
906	52	3	6	11	U-14	47.7	48.1	0.4	Single Cell Hotspot	IEC2	Minor	73	796.72	70.65848229	22.55914193
907	52	3	6	12	L-11	46.6	47.3	0.7	Single Cell Hotspot	IEC2	Minor	73	796.72	70.65844963	22.55912352
908	52	3	6	12	L-5	45.6	46.9	1.3	Single Cell Hotspot	IEC2	Minor	73	796.72	70.65838278	22.55912438
909	52	3	6	12	L-6	45.6	46.2	0.6	Single Cell Hotspot	IEC2	Minor	73	796.72	70.65839358	22.5591236
910	52	3	6	12	L-1	46.6	47.8	1.2	Single Cell Hotspot	IEC2	Minor	73	796.72	70.65833519	22.55912403
911	41	2	8	15	U-27	44.1	45.4	1.3	Single Cell Hotspot	IEC2	Minor	73	824	70.65661976	22.55909855
912	41	2	2	4	U-18	43.5	45	1.5	Single Cell Hotspot	IEC2	Minor	73	795	70.6561681	22.559106
913	5	1	10	20	L-4	44.8	45.4	0.6	Single Cell Hotspot	IEC2	Minor	73	632	70.65496752	22.55923765
914	45	2	5	10	L-9	46	46.7	0.7	Single Cell Hotspot	IEC2	Minor	73	824	70.65703048	22.55934647
915	45	2	4	8	U-17	44.5	45.3	0.8	Single Cell Hotspot	IEC2	Minor	73	795	70.65541375	22.55945233
916	4	1	12	25	L-12	45.5	46.2	0.7	Single Cell Hotspot	IEC2	Minor	73	924	70.65398161	22.55945124
917	3	1	2	2	U-2	45.3	45.9	0.6	Single Cell Hotspot	IEC2	Minor	73	924	70.65384867	22.55967426
918	3	1	7	13	L-1	45.6	46.8	1.2	Single Cell Hotspot	IEC2	Minor	73	924	70.65450093	22.55971525
919	51	3	11	24	L-6	44.6	45.3	0.7	Single Cell Hotspot	IEC2	Minor	73	796.72	70.65830002	22.55959754
920	2	1	2	3	U-13	45.2	46.5	1.3	Single Cell Hotspot	IEC2	Minor	73	632	70.65457027	22.56006948
921	2	1	2	3	U-7	45.8	46.1	0.3	Single Cell Hotspot	IEC2	Minor	73	924	70.65450303	22.56007044
922	1	1	8	16	U-1	46.2	47.6	1.4	Single Cell Hotspot	IEC2	Minor	73	924	70.65409593	22.56007598
923	1	1	1	2	U-29	45.2	46.7	1.5	Single Cell Hotspot	IEC2	Minor	73	924	70.6540613	22.56014349
924	5	1	12	24	U-2	47.2	47.9	0.7	Single Cell Hotspot	IEC2	Minor	73	924	70.65408043	22.56021012
925	3	1	12	24	U-26	47.5	48	0.5	Single Cell Hotspot	IEC2	Minor	73	924	70.65399896	22.56027909
926	70	3	8	16	U-17	57.1	57.1	0	Isolated / Underperform	IEC2	Critical	18	707.73	70.66093389	22.55667693
927	65	3	8	15	U-30	54.6	54.6	0	Isolated / Underperform	IEC2	Critical	18	707.73	70.66013438	22.55736512
928	66	3	1	1	U-2	55.6	55.6	0	Isolated / Underperform	IEC2	Critical	18	707.73	70.66012512	22.55776908
929	13	1	7	14	L-23	54.9	54.9	0	Isolated / Underperform	IEC2	Critical	18	924	70.6544408	22.55728914
930	21	1	2	3	L-18	55.1	55.1	0	Isolated / Underperform	IEC2	Critical	18	632	70.65523989	22.55680786
931	33	2	1	1	U-12	53.9	53.9	0	Isolated / Underperform	IEC2	Critical	18	795	70.6563286	22.55795695
932	30	2	11	22	L-30	55.7	55.7	0	Isolated / Underperform	IEC2	Critical	18	824	70.65727276	22.55758932
933	34	2	2	3	U-4	56.4	56.4	0	Isolated / Underperform	IEC2	Critical	18	824	70.6569152	22.55794961
934	55	3	11	21	U-26	55.4	55.4	0	Isolated / Underperform	IEC2	Critical	18	796.72	70.65841161	22.55846883
935	54	3	12	22	L-1	56.8	56.8	0	Isolated / Underperform	IEC2	Critical	18	796.72	70.6587675	22.55864688
936	52	3	7	14	L-2	55.2	55.2	0	Isolated / Underperform	IEC2	Critical	18	796.72	70.65836031	22.55905718

FID	INV_No	ICR_No	M_No	String No	Module No	Minimum Temp	Maximum Temp	Delta Temp	Anomalies Type	IEC_Category	Severity	Count	Irradiation	Long	Lat
937	51	3	4	8	L-30	54.2	54.2	0	Isolated / Underperform	IEC2	Critical	18	796.72	70.65829883	22.55926108
938	49	3	9	18	L-18	50.3	50.3	0	Isolated / Underperform	IEC2	Critical	18	796.72	70.65809682	22.55960028
939	51	3	1	1	U-1	56.4	56.4	0	Isolated / Underperform	IEC2	Critical	18	824	70.65793159	22.5594867
940	40	2	8	16	L-8	55.3	55.3	0	Isolated / Underperform	IEC2	Critical	18	824	70.65708531	22.55900753
941	5	1	10	19	U-1	53.9	53.9	0	Isolated / Underperform	IEC2	Critical	18	632	70.65493373	22.55925649
942	26	2	12	24	U-15	56.1	56.1	0	Isolated / Underperform	IEC2	Critical	18	824	70.65702344	22.55646689
943	67	3	5	9	U-4	56.2	56.2	0	Isolated / Underperform	IEC2	Critical	18	707.73	70.66067557	22.55715235
944	65	3	5	9	U-1	45.8	49.5	3.7	PID	IEC1	Critical	100	707.73	70.65966728	22.55750739
945	65	3	1	1	U-30	45.3	50.2	4.9	PID	IEC1	Critical	100	707.73	70.65965561	22.55750836
946	65	3	1	1	U-29	45.2	50.9	5.7	PID	IEC1	Critical	100	707.73	70.65964598	22.55750782
947	65	3	1	1	U-28	47	53.7	6.7	PID	IEC1	Critical	100	707.73	70.65963315	22.55750753
948	65	3	1	1	U-27	46.9	52.6	5.7	PID	IEC1	Critical	100	707.73	70.65962354	22.55750827
949	65	3	1	1	U-26	46.2	53.8	7.6	PID	IEC1	Critical	100	707.73	70.65961048	22.5575084
950	65	3	1	1	U-25	46.3	51.6	5.3	PID	IEC1	Critical	100	707.73	70.65959903	22.55750874
951	65	3	1	1	U-24	47.2	51.9	4.7	PID	IEC1	Critical	100	707.73	70.65958827	22.55750885
952	65	3	1	1	U-23	45.3	52.4	7.1	PID	IEC1	Critical	100	707.73	70.65957728	22.55750896
953	65	3	1	1	U-22	45.6	53.6	8	PID	IEC1	Critical	100	707.73	70.65956697	22.55750907
954	65	3	1	1	U-21	45.2	51.4	6.2	PID	IEC1	Critical	100	707.73	70.65955415	22.5575092
955	65	3	1	1	U-20	47.6	54.3	6.7	PID	IEC1	Critical	100	707.73	70.6595436	22.55750867
956	65	3	1	1	U-19	47.8	51.2	3.4	PID	IEC1	Critical	100	796.72	70.6595317	22.55750943
957	65	3	1	1	U-18	45.2	51.9	6.7	PID	IEC1	Critical	100	796.72	70.6595214	22.55750996
958	65	3	1	1	U-17	45.6	52.4	6.8	PID	IEC1	Critical	100	796.72	70.65950857	22.55750946
959	65	3	1	1	U-16	45.2	51.8	6.6	PID	IEC1	Critical	100	796.72	70.65949919	22.55751062
960	65	3	1	1	U-14	45.9	52.6	6.7	PID	IEC1	Critical	100	796.72	70.65947628	22.55751043
961	65	3	1	1	U-12	46.8	54	7.2	PID	IEC1	Critical	100	796.72	70.65945268	22.55751025
962	65	3	1	1	U-11	45.7	50.3	4.6	PID	IEC1	Critical	100	796.72	70.65944308	22.55751141
963	65	3	1	1	U-10	45.2	49.9	4.7	PID	IEC1	Critical	100	796.72	70.65943139	22.5575111
964	65	3	1	1	U-9	48.3	49.5	1.2	PID	IEC1	Critical	100	796.72	70.65942017	22.55751122
965	65	3	1	1	U-8	47.2	49.8	2.6	PID	IEC1	Critical	100	796.72	70.65940803	22.55751092
966	65	3	1	1	U-7	48.9	47.8	-1.1	PID	IEC1	Critical	100	796.72	70.65939795	22.55751102
967	65	3	1	1	U-6	44.2	48.9	4.7	PID	IEC1	Critical	100	796.72	70.6593872	22.55751122
968	65	3	1	1	U-5	45.2	48.2	3	PID	IEC1	Critical	100	796.72	70.65937437	22.55751191
969	65	3	1	1	U-4	44.6	49.9	5.3	PID	IEC1	Critical	100	796.72	70.65936359	22.55751117
970	65	3	1	1	U-3	45.3	50.1	4.8	PID	IEC1	Critical	100	796.72	70.65935284	22.55751255
971	65	3	1	1	U-2	45.1	50.3	5.2	PID	IEC1	Critical	100	796.72	70.65934115	22.55751182
972	65	3	1	1	U-1	45.8	49.5	3.7	PID	IEC1	Critical	100	796.72	70.65932993	22.55751215

FID	INV_No	ICR_No	M_No	String No	Module No	Minimum Temp	Maximum Temp	Delta Temp	Anomalies Type	IEC_Category	Severity	Count	Irradiation	Long	Lat
973	52	3	11	21	U-1	48.3	49.7	1.4	PID	IEC1	Critical	100	796.72	70.65868929	22.55907037
974	52	3	11	21	L-1	46.5	48.9	2.4	PID	IEC1	Critical	100	796.72	70.65868816	22.55905251
975	52	3	11	21	L-2	48.5	49.7	1.2	PID	IEC1	Critical	100	796.72	70.65869916	22.55905219
976	52	3	11	21	U-2	48.6	49.3	0.7	PID	IEC1	Critical	100	796.72	70.65869868	22.55907028
977	52	3	11	21	U-3	48.3	47.5	-0.8	PID	IEC1	Critical	100	796.72	70.65871015	22.55907143
978	52	3	11	21	L-3	47.9	50.6	2.7	PID	IEC1	Critical	100	796.72	70.65871129	22.55905164
979	52	3	11	21	L-4	48.5	50.3	1.8	PID	IEC1	Critical	100	796.72	70.65872228	22.55905131
980	52	3	11	21	U-4	49	49.7	0.7	PID	IEC1	Critical	100	796.72	70.65872205	22.55907003
981	52	3	11	21	U-5	48.5	49.2	0.7	PID	IEC1	Critical	100	796.72	70.65873328	22.55907098
982	52	3	11	21	L-5	48.5	50.2	1.7	PID	IEC1	Critical	100	796.72	70.65873283	22.55905226
983	52	3	11	21	L-6	48.2	49.7	1.5	PID	IEC1	Critical	100	796.72	70.65874497	22.55905214
984	52	3	11	21	U-6	48.5	49.6	1.1	PID	IEC1	Critical	100	796.72	70.65874405	22.5590713
985	52	3	11	21	U-7	44.3	46.2	1.9	PID	IEC1	Critical	100	796.72	70.65875596	22.55907096
986	52	3	11	21	L-7	44.5	47.2	2.7	PID	IEC1	Critical	100	796.72	70.65875594	22.55905054
987	52	3	11	21	L-8	45.9	47.3	1.4	PID	IEC1	Critical	100	796.72	70.6587667	22.55905021
988	52	3	11	21	U-8	45.1	47.8	2.7	PID	IEC1	Critical	100	796.72	70.65876672	22.55907042
989	52	3	11	21	U-9	47.6	49.5	1.9	PID	IEC1	Critical	100	796.72	70.65877748	22.55907031
990	52	3	11	21	L-9	48.2	48.9	0.7	PID	IEC1	Critical	100	796.72	70.6587777	22.5590501
991	52	3	11	21	L-10	48	48.6	0.6	PID	IEC1	Critical	100	796.72	70.65878893	22.55905105
992	52	3	11	21	U-10	47.3	49.2	1.9	PID	IEC1	Critical	100	796.72	70.65878938	22.55906891
993	52	3	11	21	U-11	47.2	48.4	1.2	PID	IEC1	Critical	100	796.72	70.65880061	22.55906986
994	52	3	11	21	L-11	47.5	49	1.5	PID	IEC1	Critical	100	796.72	70.65880108	22.55905199
995	52	3	11	21	L-12	47.2	47.9	0.7	PID	IEC1	Critical	100	796.72	70.6588116	22.55905039
996	52	3	11	21	U-12	44.2	45	0.8	PID	IEC1	Critical	100	796.72	70.65881183	22.55906953
997	52	3	11	21	U-13	47.1	50	2.9	PID	IEC1	Critical	100	796.72	70.65882328	22.5590692
998	52	3	11	21	L-13	47.9	48.5	0.6	PID	IEC1	Critical	100	796.72	70.65882306	22.55905048
999	52	3	11	21	L-14	48.5	49.4	0.9	PID	IEC1	Critical	100	796.72	70.65883473	22.55904951
1000	52	3	11	21	U-14	48.5	50.2	1.7	PID	IEC1	Critical	100	796.72	70.65883473	22.5590693
1001	52	3	11	21	U-15	47.8	49.4	1.6	PID	IEC1	Critical	100	796.72	70.65884458	22.55906856
1002	52	3	11	21	L-15	48.6	49.1	0.5	PID	IEC1	Critical	100	796.72	70.65884546	22.55904642
1003	68	3	2	3	U-1	45.3	50.6	5.3	PID	IEC1	Critical	100	707.73	70.65962696	22.55717092
1004	68	3	2	3	U-2	45.8	49.3	3.5	PID	IEC1	Critical	100	707.73	70.65963772	22.55717081
1005	68	3	2	3	U-3	45.7	48.3	2.6	PID	IEC1	Critical	100	707.73	70.65964803	22.55717092
1006	68	3	2	3	U-4	45	49.2	4.2	PID	IEC1	Critical	100	707.73	70.65965948	22.55717016
1007	68	3	2	3	U-5	45.7	48.9	3.2	PID	IEC1	Critical	100	707.73	70.65967025	22.55717047
1008	68	3	2	3	U-6	45.2	49.2	4	PID	IEC1	Critical	100	707.73	70.6596817	22.55717036

FID	INV_No	ICR_No	M_No	String No	Module No	Minimum Temp	Maximum Temp	Delta Temp	Anomalies Type	IEC_Category	Severity	Count	Irradiation	Long	Lat
1009	68	3	2	3	U-7	45.2	49.6	4.4	PID	IEC1	Critical	100	707.73	70.65969246	22.55717025
1010	68	3	2	3	U-8	45.3	50.3	5	PID	IEC1	Critical	100	707.73	70.65970391	22.5571697
1011	68	3	2	3	U-9	45.3	50.1	4.8	PID	IEC1	Critical	100	707.73	70.65971399	22.5571696
1012	668	3	2	3	U-10	45.7	50.3	4.6	PID	IEC1	Critical	100	707.73	70.65972658	22.55716947
1013	68	3	2	3	U-11	45.8	50.5	4.7	PID	IEC1	Critical	100	707.73	70.65973895	22.55716934
1014	68	3	2	3	U-12	45.8	50.6	4.8	PID	IEC1	Critical	100	707.73	70.65974949	22.55716923
1015	68	3	2	3	U-13	45.6	50.8	5.2	PID	IEC1	Critical	100	707.73	70.65976117	22.55716954
1016	68	3	2	3	U-14	45.59	51.2	5.61	PID	IEC1	Critical	100	707.73	70.65977216	22.55716878
1017	68	3	2	3	U-15	45.8	51.5	5.7	PID	IEC1	Critical	100	707.73	70.65978315	22.55716867
1018	68	3	2	3	U-16	46.7	51.6	4.9	PID	IEC1	Critical	100	707.73	70.65979368	22.55716792
1019	68	3	2	3	U-17	46.8	51.4	4.6	PID	IEC1	Critical	100	707.73	70.6598065	22.55716779
1020	68	3	2	3	U-18	45.6	51.7	6.1	PID	IEC1	Critical	100	707.73	70.65981773	22.55716768
1021	68	3	2	3	U-19	47.5	51.8	4.3	PID	IEC1	Critical	100	707.73	70.65982688	22.55716694
1022	68	3	2	3	U-20	46.5	52.3	5.8	PID	IEC1	Critical	100	707.73	70.65983901	22.55716618
1023	68	3	2	3	U-21	47.5	54.6	7.1	PID	IEC1	Critical	100	707.73	70.65985115	22.55716584
1024	68	3	2	4	L-21	47.5	54.8	7.3	PID	IEC1	Critical	100	707.73	70.65985071	22.55714861
1025	68	3	2	4	L-20	45.7	54.6	8.9	PID	IEC1	Critical	100	707.73	70.65983879	22.5571481
1026	68	3	2	4	L-22	44.5	53.4	8.9	PID	IEC1	Critical	100	707.73	70.65986082	22.55715085
1027	68	3	2	4	L-23	46.8	53.8	7	PID	IEC1	Critical	100	707.73	70.6598718	22.55715031
1028	68	3	2	3	U-23	47.2	54.7	7.5	PID	IEC1	Critical	100	707.73	70.65987357	22.55716412
1029	68	3	2	3	U-22	45.6	58.4	12.8	PID	IEC1	Critical	100	707.73	70.65985917	22.55716618
1030	68	3	2	3	U-24	45.9	53.4	7.5	PID	IEC1	Critical	100	707.73	70.65988458	22.55716528
1031	68	3	2	3	U-25	45.2	52.2	7	PID	IEC1	Critical	100	707.73	70.65989626	22.55716538
1032	68	3	2	4	L-25	48.6	50.9	2.3	PID	IEC1	Critical	100	707.73	70.65989608	22.55715006
1033	68	3	2	4	L-24	45.9	52.7	6.8	PID	IEC1	Critical	100	707.73	70.65988326	22.55715062
1034	68	3	2	4	L-27	45.1	52.4	7.3	PID	IEC1	Critical	100	707.73	70.65991784	22.55714962
1035	68	3	2	3	U-27	45.7	54.8	9.1	PID	IEC1	Critical	100	707.73	70.65991803	22.55716536
1036	68	3	2	3	U-26	45.6	52.4	6.8	PID	IEC1	Critical	100	707.73	70.65990635	22.5571657
1037	68	3	2	4	L-26	45.8	57.8	12	PID	IEC1	Critical	100	707.73	70.65990592	22.55714889
1038	68	3	2	4	L-28	46.3	56.2	9.9	PID	IEC1	Critical	100	707.73	70.65992951	22.55714908
1039	68	3	2	3	U-28	46.8	54.8	8	PID	IEC1	Critical	100	707.73	70.65992834	22.5571659
1040	68	3	2	3	U-29	46.8	54.3	7.5	PID	IEC1	Critical	100	707.73	70.65994002	22.55716556
1041	68	3	2	4	L-29	46.9	52.3	5.4	PID	IEC1	Critical	100	707.73	70.65994005	22.55714918
1042	68	3	2	4	L-30	46.5	52.3	5.8	PID	IEC1	Critical	100	707.73	70.6599515	22.55714864
1043	68	3	2	3	U-30	46.7	52.9	6.2	PID	IEC1	Critical	100	707.73	70.65995125	22.55716608
1044	75	3	5	9	U-19	45.2	45.8	0.6	Multi Cell Hotspot	Uncategorized	Minor	132	707.73	70.6608022	22.55506153

FID	INV_No	ICR_No	M_No	String No	Module No	Minimum Temp	Maximum Temp	Delta Temp	Anomalies Type	IEC_Category	Severity	Count	Irradiation	Long	Lat
1045	75	3	10	20	L-3	47.5	51.3	3.8	Multi Cell Hotspot	Uncategorized	Minor	132	707.73	70.66045299	22.55518308
1046	75	3	11	21	U-8	48.3	51.3	3	Multi Cell Hotspot	Uncategorized	Minor	132	707.73	70.66050828	22.55513306
1047	71	3	12	23	U-20	46.7	52.4	5.7	Multi Cell Hotspot	Uncategorized	Minor	132	707.73	70.66039207	22.55594277
1048	70	3	4	7	U-26	48.2	55.6	7.4	Multi Cell Hotspot	Uncategorized	Minor	132	707.73	70.66069612	22.55667984
1049	71	3	10	20	L-23	47.5	51.9	4.4	Multi Cell Hotspot	Uncategorized	Minor	132	707.73	70.66030725	22.55673794
1050	70	3	2	4	L-12	46.5	52.6	6.1	Multi Cell Hotspot	Uncategorized	Minor	132	707.73	70.66050527	22.55680065
1051	68	3	1	2	L-2	45.2	54	8.8	Multi Cell Hotspot	Uncategorized	Minor	132	707.73	70.65961961	22.5572196
1052	67	3	10	19	L-13	47.2	54.2	7	Multi Cell Hotspot	Uncategorized	Minor	132	707.73	70.66107543	22.55726206
1053	67	3	10	20	L-15	46.5	51.9	5.4	Multi Cell Hotspot	Uncategorized	Minor	132	707.73	70.66112236	22.55719456
1054	67	3	5	9	U-28	48.3	54.3	6	Multi Cell Hotspot	Uncategorized	Minor	132	707.73	70.66093021	22.55721545
1055	66	3	1	11	U-12	45.5	51.2	5.7	Multi Cell Hotspot	Uncategorized	Minor	132	707.73	70.66010949	22.55763542
1056	65	3	4	8	L-25	46.7	51.6	4.9	Multi Cell Hotspot	Uncategorized	Minor	132	707.73	70.65991558	22.55761943
1057	64	3	7	13	U-11	45.6	51.8	6.2	Multi Cell Hotspot	Uncategorized	Minor	132	796.72	70.65924385	22.55737789
1058	59	3	7	13	L-6	47.5	52.4	4.9	Multi Cell Hotspot	Uncategorized	Minor	132	796.72	70.65884889	22.5573659
1059	75	3	6	12	L-2	48.8	51.7	2.9	Multi Cell Hotspot	Uncategorized	Minor	132	707.73	70.66060859	22.55497715
1060	67	3	2	4	L-3	47.3	53.2	5.9	Multi Cell Hotspot	Uncategorized	Minor	132	707.73	70.66038128	22.55740959
1061	23	1	3	5	L-3	45.5	53	7.5	Multi Cell Hotspot	Uncategorized	Minor	132	924	70.65423459	22.55634767
1062	22	1	8	16	L-28	45.6	53.2	7.6	Multi Cell Hotspot	Uncategorized	Minor	132	924	70.65417718	22.55634918
1063	22	1	8	16	L-27	45.8	53.2	7.4	Multi Cell Hotspot	Uncategorized	Minor	132	924	70.65416513	22.55634957
1064	23	1	8	15	U-6	45.7	53.4	7.7	Multi Cell Hotspot	Uncategorized	Minor	132	924	70.65460693	22.55636155
1065	24	1	5	9	U-24	45.2	53.8	8.6	Multi Cell Hotspot	Uncategorized	Minor	132	632	70.65546016	22.55628547
1066	24	1	7	14	L-10	45.3	53.4	8.1	Multi Cell Hotspot	Uncategorized	Minor	132	795	70.65558711	22.55653634
1067	24	1	7	13	U-2	45.3	53.6	8.3	Multi Cell Hotspot	Uncategorized	Minor	132	632	70.65550028	22.55655454
1068	24	1	7	13	U-1	45.8	53.8	8	Multi Cell Hotspot	Uncategorized	Minor	132	632	70.65548806	22.55655467
1069	19	1	4	7	U-3	45.8	53.9	8.1	Multi Cell Hotspot	Uncategorized	Minor	132	924	70.6534326	22.55671042
1070	15	1	11	21	U-22	45.6	52.9	7.3	Multi Cell Hotspot	Uncategorized	Minor	132	924	70.65390602	22.55690669
1071	15	1	11	21	U-21	45.6	53.8	8.2	Multi Cell Hotspot	Uncategorized	Minor	132	924	70.65389434	22.55690745
1072	15	1	11	21	U-14	46.5	53.4	6.9	Multi Cell Hotspot	Uncategorized	Minor	132	924	70.65381827	22.55690988
1073	16	1	8	15	U-6	46.3	52.6	6.3	Multi Cell Hotspot	Uncategorized	Minor	132	924	70.65435185	22.55703816
1074	17	1	5	10	L-5	46.2	53.6	7.4	Multi Cell Hotspot	Uncategorized	Minor	132	924	70.65472928	22.55688267
1075	16	1	1	2	L-21	46.8	53.4	6.6	Multi Cell Hotspot	Uncategorized	Minor	132	924	70.65413259	22.55715686
1076	13	1	6	12	L-5	46.8	53.9	7.1	Multi Cell Hotspot	Uncategorized	Minor	132	924	70.65457733	22.55728591
1077	10	1	5	11	L-15	46.9	52.9	6	Multi Cell Hotspot	Uncategorized	Minor	132	924	70.65468282	22.5578921
1078	10	1	5	10	U-24	46.2	52.8	6.6	Multi Cell Hotspot	Uncategorized	Minor	132	924	70.65478377	22.55790778
1079	10	1	3	7	L-13	46.8	53.8	7	Multi Cell Hotspot	Uncategorized	Minor	132	924	70.65463361	22.55802931
1080	10	1	3	7	L-18	46.8	53.1	6.3	Multi Cell Hotspot	Uncategorized	Minor	132	924	70.65468948	22.55802738

FID	INV_No	ICR_No	M_No	String No	Module No	Minimum Temp	Maximum Temp	Delta Temp	Anomalies Type	IEC_Category	Severity	Count	Irradiation	Long	Lat
1081	10	1	3	7	L-23	46.7	53.1	6.4	Multi Cell Hotspot	Uncategorized	Minor	132	924	70.65475731	22.55802668
1082	10	1	4	9	L-6	46.2	53.2	7	Multi Cell Hotspot	Uncategorized	Minor	132	924	70.65456741	22.55796229
1083	12	1	4	7	U-12	45.9	53.3	7.4	Multi Cell Hotspot	Uncategorized	Minor	132	632	70.65502485	22.55770285
1084	14	1	1	2	L-1	45.8	53.3	7.5	Multi Cell Hotspot	Uncategorized	Minor	132	924	70.65492802	22.55755338
1085	25	2	1	2	L-23	45.4	53.3	7.9	Multi Cell Hotspot	Uncategorized	Minor	132	795	70.65602252	22.55666301
1086	27	2	2	4	L-14	43.5	53.6	10.1	Multi Cell Hotspot	Uncategorized	Minor	132	795	70.65610735	22.55706403
1087	17	2	3	5	U-18	43.5	53.6	10.1	Multi Cell Hotspot	Uncategorized	Minor	132	795	70.65617776	22.55701394
1088	18	1	5	9	U-1	45.3	53.4	8.1	Multi Cell Hotspot	Uncategorized	Minor	132	632	70.6553101	22.55702668
1089	18	1	8	16	L-15	46.2	53.8	7.6	Multi Cell Hotspot	Uncategorized	Minor	132	795	70.65572911	22.55720527
1090	14	1	5	10	L-27	45.9	53.2	7.3	Multi Cell Hotspot	Uncategorized	Minor	132	795	70.65569891	22.55740856
1091	31	2	2	3	U-1	45.2	53.2	8	Multi Cell Hotspot	Uncategorized	Minor	132	795	70.65574474	22.55742438
1092	31	2	12	23	L-1	45.7	53.1	7.4	Multi Cell Hotspot	Uncategorized	Minor	132	795	70.65594282	22.55753776
1093	12	1	9	18	L-30	46.2	53.4	7.2	Multi Cell Hotspot	Uncategorized	Minor	132	795	70.6555668	22.5576797
1094	10	1	11	21	U-28	48.2	54.2	6	Multi Cell Hotspot	Uncategorized	Minor	132	795	70.65583203	22.55796262
1095	33	2	1	2	L-2	48.9	53.4	4.5	Multi Cell Hotspot	Uncategorized	Minor	132	795	70.65621522	22.55794073
1096	10	1	12	23	L-7	46.7	53.6	6.9	Multi Cell Hotspot	Uncategorized	Minor	132	795	70.65625801	22.55800775
1097	33	2	10	20	L-29	49.6	53.8	4.2	Multi Cell Hotspot	Uncategorized	Minor	132	824	70.65685652	22.5579314
1098	57	2	5	9	U-18	47.3	54.3	7	Multi Cell Hotspot	Uncategorized	Minor	132	796.72	70.65841415	22.55799629
1099	57	2	5	10	L-20	42.5	53.2	10.7	Multi Cell Hotspot	Uncategorized	Minor	132	796.72	70.65843615	22.55797798
1100	57	2	8	16	L-1	45.6	53.2	7.6	Multi Cell Hotspot	Uncategorized	Minor	132	796.72	70.65856093	22.55797371
1101	60	3	8	16	L-22	45.8	51.2	5.4	Multi Cell Hotspot	Uncategorized	Minor	132	824	70.6583511	22.55737162
1102	63	3	2	3	U-13	45.2	51.7	6.5	Multi Cell Hotspot	Uncategorized	Minor	132	824	70.65807613	22.55719107
1103	28	2	7	14	L-30	45.3	51.4	6.1	Multi Cell Hotspot	Uncategorized	Minor	132	824	70.65725204	22.55718625
1104	31	2	6	11	U-25	47.6	52.6	5	Multi Cell Hotspot	Uncategorized	Minor	132	795	70.65618069	22.55721843
1105	31	2	6	11	U-29	47.8	52.8	5	Multi Cell Hotspot	Uncategorized	Minor	132	795	70.65622727	22.55721822
1106	27	2	9	17	U-26	47.3	53.2	5.9	Multi Cell Hotspot	Uncategorized	Minor	132	795	70.65658066	22.55707899
1107	27	2	9	17	U-29	47.6	53.6	6	Multi Cell Hotspot	Uncategorized	Minor	132	824	70.65661582	22.55707997
1108	34	2	5	9	U-30	47.5	53.2	5.7	Multi Cell Hotspot	Uncategorized	Minor	132	824	70.65727356	22.55760552
1109	29	2	9	18	L-19	47.8	53.2	5.4	Multi Cell Hotspot	Uncategorized	Minor	132	824	70.65751379	22.55745091
1110	34	2	1	2	L-19	48.5	52.9	4.4	Multi Cell Hotspot	Uncategorized	Minor	132	824	70.65706964	22.55799688
1111	30	2	2	3	U-26	48.1	52.8	4.7	Multi Cell Hotspot	Uncategorized	Minor	132	824	70.65656332	22.55754806
1112	26	2	2	3	U-28	48.7	53.1	4.4	Multi Cell Hotspot	Uncategorized	Minor	132	824	70.6567047	22.55680671
1113	26	2	10	20	L-9	48.1	53.4	5.3	Multi Cell Hotspot	Uncategorized	Minor	132	824	70.65690539	22.55658452
1114	25	2	3	6	L-9	48.5	53.6	5.1	Multi Cell Hotspot	Uncategorized	Minor	132	795	70.65591582	22.55652978
1115	9	1	11	21	U-6	48.6	53.4	4.8	Multi Cell Hotspot	Uncategorized	Minor	132	632	70.6551507	22.55844258
1116	38	2	4	8	L-23	48.2	53.6	5.4	Multi Cell Hotspot	Uncategorized	Minor	132	795	70.65634392	22.55847715

FID	INV_No	ICR_No	M_No	String No	Module No	Minimum Temp	Maximum Temp	Delta Temp	Anomalies Type	IEC_Category	Severity	Count	Irradiation	Long	Lat
1117	35	2	4	8	L-11	47.9	53.7	5.8	Multi Cell Hotspot	Uncategorized	Minor	132	795	70.65625007	22.55827444
1118	37	2	8	16	L-2	47.8	53.2	5.4	Multi Cell Hotspot	Uncategorized	Minor	132	795	70.65572867	22.55868843
1119	9	1	9	18	L-9	47.1	53.9	6.8	Multi Cell Hotspot	Uncategorized	Minor	132	632	70.65515638	22.55856156
1120	7	1	12	24	L-20	47.6	53.7	6.1	Multi Cell Hotspot	Uncategorized	Minor	132	632	70.65490361	22.55876675
1121	42	2	6	11	U-12	47.2	53.8	6.6	Multi Cell Hotspot	Uncategorized	Minor	132	795	70.65546335	22.55891245
1122	40	2	4	7	U-13	47.7	53.5	5.8	Multi Cell Hotspot	Uncategorized	Minor	132	824	70.65683032	22.55889525
1123	52	3	10	20	U-15	45.2	53.2	8	Multi Cell Hotspot	Uncategorized	Minor	132	796.72	70.65883292	22.55913512
1124	52	3	10	20	L-12	45.3	51.2	5.9	Multi Cell Hotspot	Uncategorized	Minor	132	796.72	70.65879837	22.55911872
1125	52	3	10	20	U-11	46.5	51.6	5.1	Multi Cell Hotspot	Uncategorized	Minor	132	796.72	70.65878927	22.55913666
1126	52	3	10	20	L-7	45.6	51.8	6.2	Multi Cell Hotspot	Uncategorized	Minor	132	796.72	70.65874278	22.55911956
1127	52	3	6	11	U-24	45.6	51.2	5.6	Multi Cell Hotspot	Uncategorized	Minor	132	796.72	70.65859716	22.55913891
1128	52	3	6	11	U-21	45.8	52.4	6.6	Multi Cell Hotspot	Uncategorized	Minor	132	796.72	70.6585634	22.55914034
1129	52	3	6	11	U-20	45.7	52.3	6.6	Multi Cell Hotspot	Uncategorized	Minor	132	796.72	70.65855202	22.55913802
1130	52	3	6	11	U-17	45.6	54.2	8.6	Multi Cell Hotspot	Uncategorized	Minor	132	796.72	70.65851829	22.55914162
1131	52	3	6	11	U-7	45.8	51.2	5.4	Multi Cell Hotspot	Uncategorized	Minor	132	796.72	70.65840535	22.55914251
1132	52	3	7	14	L-16	45.7	52.3	6.6	Multi Cell Hotspot	Uncategorized	Minor	132	796.72	70.65851754	22.55905456
1133	52	3	7	14	L-27	45.1	52.6	7.5	Multi Cell Hotspot	Uncategorized	Minor	132	796.72	70.6586427	22.55905245
1134	52	3	8	16	U-5	45	51.8	6.8	Multi Cell Hotspot	Uncategorized	Minor	132	796.72	70.65840869	22.55900809
1135	43	2	11	22	L-17	45.2	51.3	6.1	Multi Cell Hotspot	Uncategorized	Minor	132	824	70.65714718	22.5592086
1136	41	2	5	9	U-6	45.3	54.6	9.3	Multi Cell Hotspot	Uncategorized	Minor	132	795	70.65607489	22.5589037
1137	4	1	4	7	U-14	45.6	52.3	6.7	Multi Cell Hotspot	Uncategorized	Minor	132	924	70.65407823	22.55919902
1138	5	1	3	6	L-22	45.8	52.6	6.8	Multi Cell Hotspot	Uncategorized	Minor	132	632	70.65483074	22.55923767
1139	5	1	9	17	U-27	45.9	52.8	6.9	Multi Cell Hotspot	Uncategorized	Minor	132	632	70.65521636	22.55931671
1140	45	2	5	9	U-18	45.7	52.9	7.2	Multi Cell Hotspot	Uncategorized	Minor	132	795	70.65543627	22.55938336
1141	5	1	5	9	U-28	46.2	53.1	6.9	Multi Cell Hotspot	Uncategorized	Minor	132	632	70.65517124	22.55959125
1142	46	2	6	12	L-1	46.8	52.4	5.6	Multi Cell Hotspot	Uncategorized	Minor	132	632	70.65516527	22.55977349
1143	46	2	5	9	U-19	45.8	53.8	8	Multi Cell Hotspot	Uncategorized	Minor	132	795	70.65535597	22.55985564
1144	2	1	1	1	U-25	46.3	53.6	7.3	Multi Cell Hotspot	Uncategorized	Minor	132	632	70.65469366	22.56013538
1145	46	2	1	1	U-10	45.2	83.7	38.5	Multi Cell Hotspot	Uncategorized	Minor	132	632	70.65519934	22.56012847
1146	46	2	8	15	U-20	46.5	53.4	6.9	Multi Cell Hotspot	Uncategorized	Minor	132	795	70.65567823	22.55999188
1147	2	1	11	22	L-6	45.2	52.9	7.7	Multi Cell Hotspot	Uncategorized	Minor	132	632	70.65487043	22.55984484
1148	3	1	2	2	L-27	45.5	52.8	7.3	Multi Cell Hotspot	Uncategorized	Minor	132	924	70.65412872	22.55965096
1149	3	1	2	2	L-26	44.5	52.4	7.9	Multi Cell Hotspot	Uncategorized	Minor	132	924	70.65411874	22.55965175
1150	3	1	2	2	L-6	45.3	52.4	7.1	Multi Cell Hotspot	Uncategorized	Minor	132	924	70.65389354	22.55965547
1151	3	1	3	5	U-30	45.8	52.3	6.5	Multi Cell Hotspot	Uncategorized	Minor	132	924	70.65417816	22.55960307
1152	1	1	2	3	L-16	46.8	53.4	6.6	Multi Cell Hotspot	Uncategorized	Minor	132	924	70.65392743	22.56005995

FID	INV_No	ICR_No	M_No	String No	Module No	Minimum Temp	Maximum Temp	Delta Temp	Anomalies Type	IEC_Category	Severity	Count	Irradiation	Long	Lat
1153	1	1	12	23	L-1	45.2	53.6	8.4	Multi Cell Hotspot	Uncategorized	Minor	132	924	70.65414934	22.55978471
1154	44	2	8	15	U-2	44.9	53.8	8.9	Multi Cell Hotspot	Uncategorized	Minor	132	795	70.65624723	22.55950887
1155	50	3	8	15	U-29	45.3	52.3	7	Multi Cell Hotspot	Uncategorized	Minor	132	824	70.65793482	22.5593508
1156	52	3	10	19	U-1	48.2	53.2	5	Multi Cell Hotspot	Uncategorized	Minor	132	796.72	70.65866204	22.55920451
1157	52	3	10	19	L-6	46.3	53.1	6.8	Multi Cell Hotspot	Uncategorized	Minor	132	796.72	70.65871807	22.5591877
1158	52	3	10	19	L-8	48.5	52.3	3.8	Multi Cell Hotspot	Uncategorized	Minor	132	796.72	70.6587415	22.55918762
1159	52	3	10	19	U-15	46.2	51.1	4.9	Multi Cell Hotspot	Uncategorized	Minor	132	796.72	70.65881993	22.55920506
1160	49	3	9	17	U-18	46.3	51.4	5.1	Multi Cell Hotspot	Uncategorized	Minor	132	796.72	70.65809742	22.55961925
1161	49	3	6	12	L-4	46.2	51.7	5.5	Multi Cell Hotspot	Uncategorized	Minor	132	824	70.65758568	22.55967564
1162	49	3	3	6	L-20	46.3	51.6	5.3	Multi Cell Hotspot	Uncategorized	Minor	132	824	70.65742889	22.55967654
1163	43	2	7	13	U-20	46.7	51.4	4.7	Multi Cell Hotspot	Uncategorized	Minor	132	824	70.65712858	22.5594976
1164	43	2	1	2	L-19	46.7	51.9	5.2	Multi Cell Hotspot	Uncategorized	Minor	132	824	70.6567781	22.55948406
1165	48	2	7	13	U-5	46.8	51.8	5	Multi Cell Hotspot	Uncategorized	Minor	132	824	70.65689318	22.5598369
1166	48	2	7	14	L-1	46.2	52.4	6.2	Multi Cell Hotspot	Uncategorized	Minor	132	824	70.65684922	22.5598199
1167	55	3	4	8	L-8	45.3	52.1	6.8	Multi Cell Hotspot	Uncategorized	Minor	132	824	70.65784386	22.55859173
1168	55	3	8	15	U-16	42.7	53.9	11.2	Multi Cell Hotspot	Uncategorized	Minor	132	824	70.65798537	22.55833903
1169	38	2	2	4	L-26	46.2	54.5	8.3	Multi Cell Hotspot	Uncategorized	Minor	132	795	70.6563385	22.55867899
1170	46	2	1	1	U-22	44.3	49.6	5.3	Multi Cell Hotspot	Uncategorized	Moderate	132	632	70.6553374	22.56012837
1171	52	3	7	13	U-30	45.6	53.4	7.8	Multi Cell Hotspot	Uncategorized	Moderate	132	796.72	70.65867597	22.55906959
1172	10	1	12	24	U-17	47.6	53.8	6.2	Multi Cell Hotspot	Uncategorized	Moderate	132	632	70.65545896	22.55817012
1173	10	1	7	14	U-25	46.02	49.8	3.78	Multi Cell Hotspot	Uncategorized	Minor	132	632	70.65511982	22.55797215
1174	24	1	12	24	U-11	45.6	49.2	3.6	Multi Cell Hotspot	Uncategorized	Moderate	132	632	70.65549556	22.55614874
1175	21	1	1	2	L-1	45.8	50.6	4.8	Multi Cell Hotspot	Uncategorized	Moderate	132	924	70.65502247	22.55687723
1176	27	2	6	12	L-17	47.7	56	8.3	Short_Circuited_Module	IEC2	Critical	4	795	70.65624376	22.55679449
1177	37	2	9	17	U-4	45.3	65.7	20.4	Short_Circuited_Module	IEC2	Critical	4	795	70.65576584	22.55863768
1178	56	3	12	22	L-13	46	60.2	14.2	Short_Circuited_Module	IEC2	Critical	4	796.72	70.65896766	22.55830789
1179	42	2	7	14	L-6	46.8	61.3	14.5	Short_Circuited_Module	IEC2	Critical	4	795	70.65567859	22.559228